

300 Amp Ground Clamp

P/N: 8100746

Tool Features

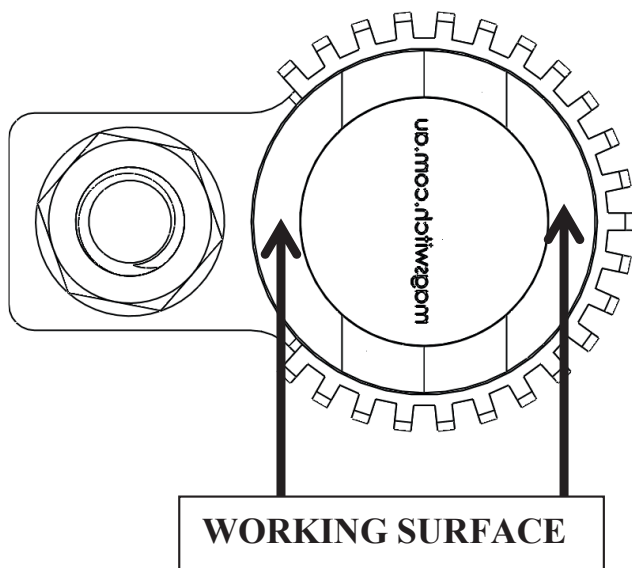
The Magswitch finned magnetic ground clamps let welders quickly set up, weld and move on to the next job. Simply place it on a clean work surface, turn it on and start welding. Instant ground on a flat surface or a pipe. The finned design lowers the temperature of the unit by almost 27%.



WARNING!
DO NOT OPERATE UNLESS IN
CONTACT WITH FERROUS TARGET

Specifications

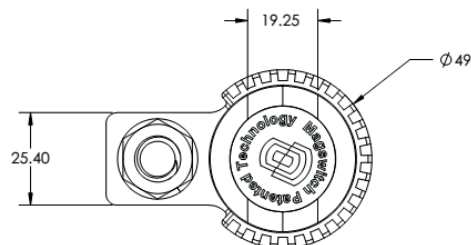
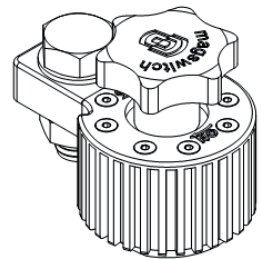
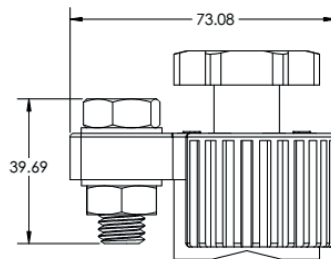
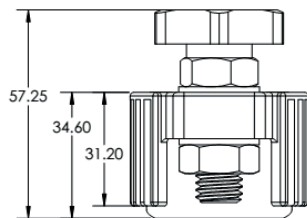
Magnet Strength	90 lbs	40 kg
Net Weight	0.8 lbs	0.4 kg
Overall Height	57.3 mm	
Magnetic Pole Footprint	40 mm Diameter	



300 Amp Ground Clamp

P/N: 8100746

Drawings

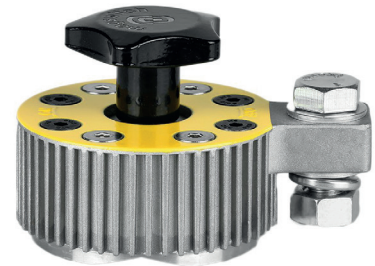


600 Amp Ground Clamp

P/N: 8100747

Tool Features

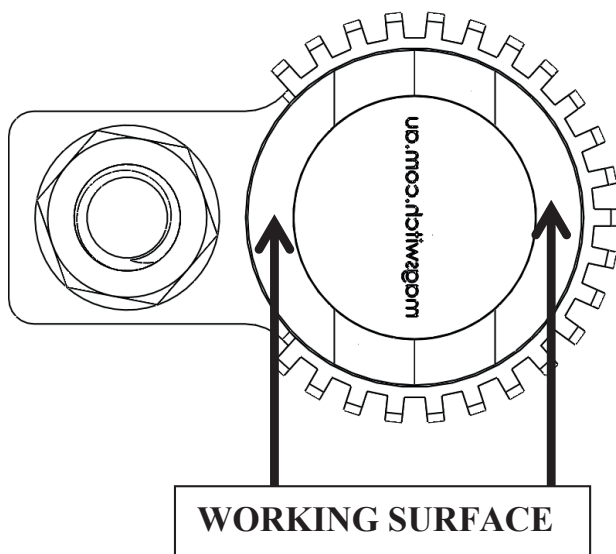
The Magswitch Finned Magnetic Ground Clamps let welders quickly set up, weld and move on to the next job. Simply place it on a clean work surface, turn it on and start welding. Instant ground on a flat surface or a pipe. The finned design lowers the temperature of the unit by almost 27%.



WARNING!
DO NOT OPERATE UNLESS IN
CONTACT WITH FERROUS TARGET

Specifications

Magnet Strength	200 lbs	89 kg
Net Weight	1.8 lbs	0.8 kg
Overall Height	4.0 in	(103.0 mm)
Magnetic Pole Footprint	69 mm diameter	



600 Amp Ground Clamp

P/N: 8100747

Drawings

