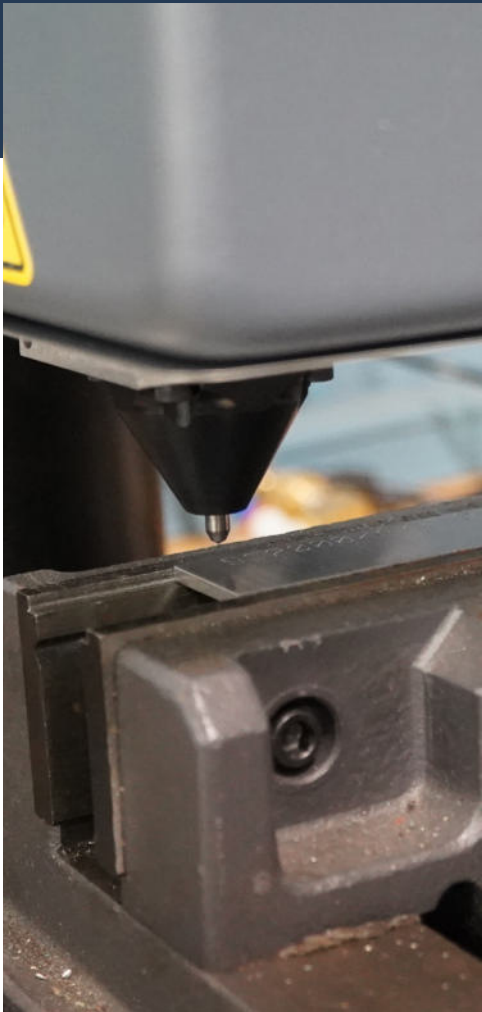
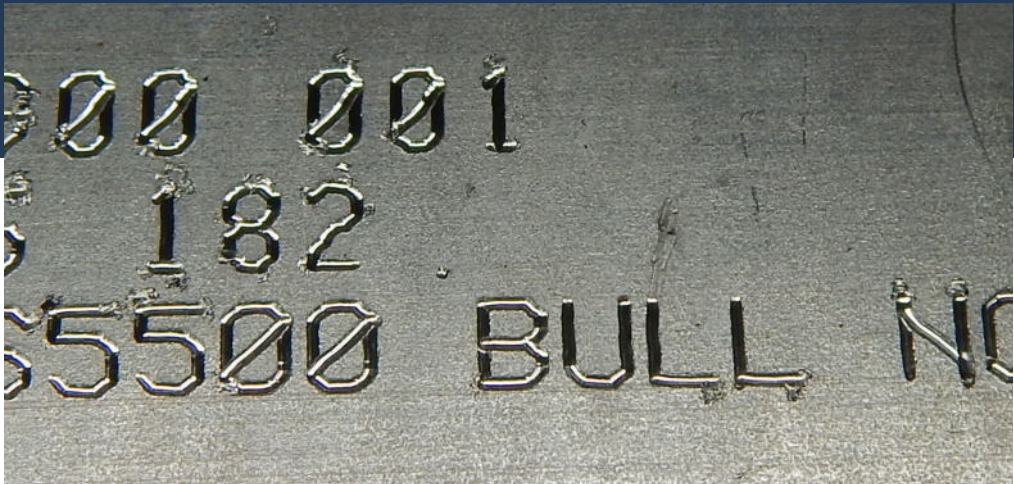


# TeleScribe® SC5000

Deep. Durable. Dependable.



## Key Features

**Rugged X/Y Platform:** Designed for high-precision scribe marking with durable construction for long-term reliability.

**Quiet, Vibration-Free Operation:** Virtually silent marking system ideal for noise-sensitive environments.

**Material Versatility:** Marks a wide range of materials, from plastics to hardened steel, ensuring deep and permanent marks.

**Consistent, Continuous Line Marking:** Creates high-quality, smooth marks

**Automated Marking Functions:** Supports serialization, time/date codes, and other automated marking sequences.

## Performance Specifications

Material Compatibility	Soft plastics to hardened steel (up to RC60)
Marking Depth	0.001 in to 0.018 in (0.03 mm to 0.45 mm)
Pattern Storage	Hundreds of patterns
Connectivity	PLC, host computer interface
Available Models	SC5000

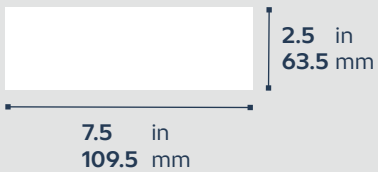
## Options + Accessories

- Bar Code Scanner
- Controller
- Diamond Tip Pins
- Foot Switch
- Marking Cable Extension
- Rotary Fixture
- Mounting Post
- System Computer
- Various Marking Pins

## Seamless Integration

Beyond its superior marking capabilities, the SC5000 is built for easy integration into diverse production environments. The system's compliance with UL, CSA, CE, and RoHS specifications underscores its commitment to safety and environmental standards.

## Marking Area

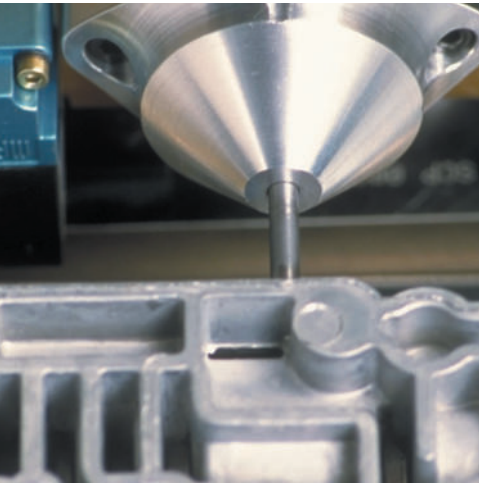


## Head Dimensions

W x D x H			
7.84 in	x	8.76 in	x 15.51 in
199 mm	x	223 mm	x 394 mm



TeleScribe® SC5000



## Unmatched Precision

The Telesis SC5000 stands at the forefront of industrial marking technology, offering unparalleled precision and efficiency for permanent part identification. Engineered to inscribe messages into a variety of materials, including steel, aluminum, and plastic, this advanced system ensures that each mark is clear, consistent, and enduring.

## Expanded Capability

Designed with a spacious 7.5 x 2.5-inch marking window, the SC5000 accommodates larger components, making it ideal for applications such as chassis VIN marking. Its robust construction and high-performance servo motors enable deeper and wider marks, ensuring legibility even under challenging conditions.