

MagMount 150

P/N: 8100579

Tool Features

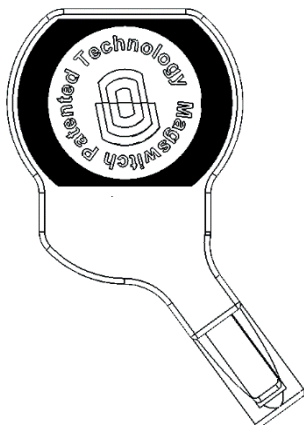
The Magswitch MagMount is a single lever operation switchable magnet that allows for easy movement and placement of a tool. The top mount magnets feature two magnets are ideal for supporting fixtures over a distance. The fixed bar magnet is for flat steel, the swivel bar magnet is for round or uneven shapes.



WARNING!
DO NOT OPERATE UNLESS IN
CONTACT WITH FERROUS TARGET

Specifications

Max Breakaway *	150 lbs	68 kg
Full Saturation Thickness	10ga	2.5 mm
2:1 Shear Working Load *	10.6 lbs	4.8 kg
Net Weight	0.8 lbs	0.4 kg
Overall Height	32 mm	
Magnetic Pole Footprint	40 mm x 31.2 mm	



WORKING SURFACE
BLACK = BEST

* Max Breakaway determined in laboratory environment on 2" thick SAE1018 Steel with surface roughness 63 micro inches. Many factors contribute to the actual breakaway force in each application. Always test the magswitch in each application before deployment. Refer to the magswitch information booklet for more information.

MAGMOUNT 150
8100579

Doc Num 01

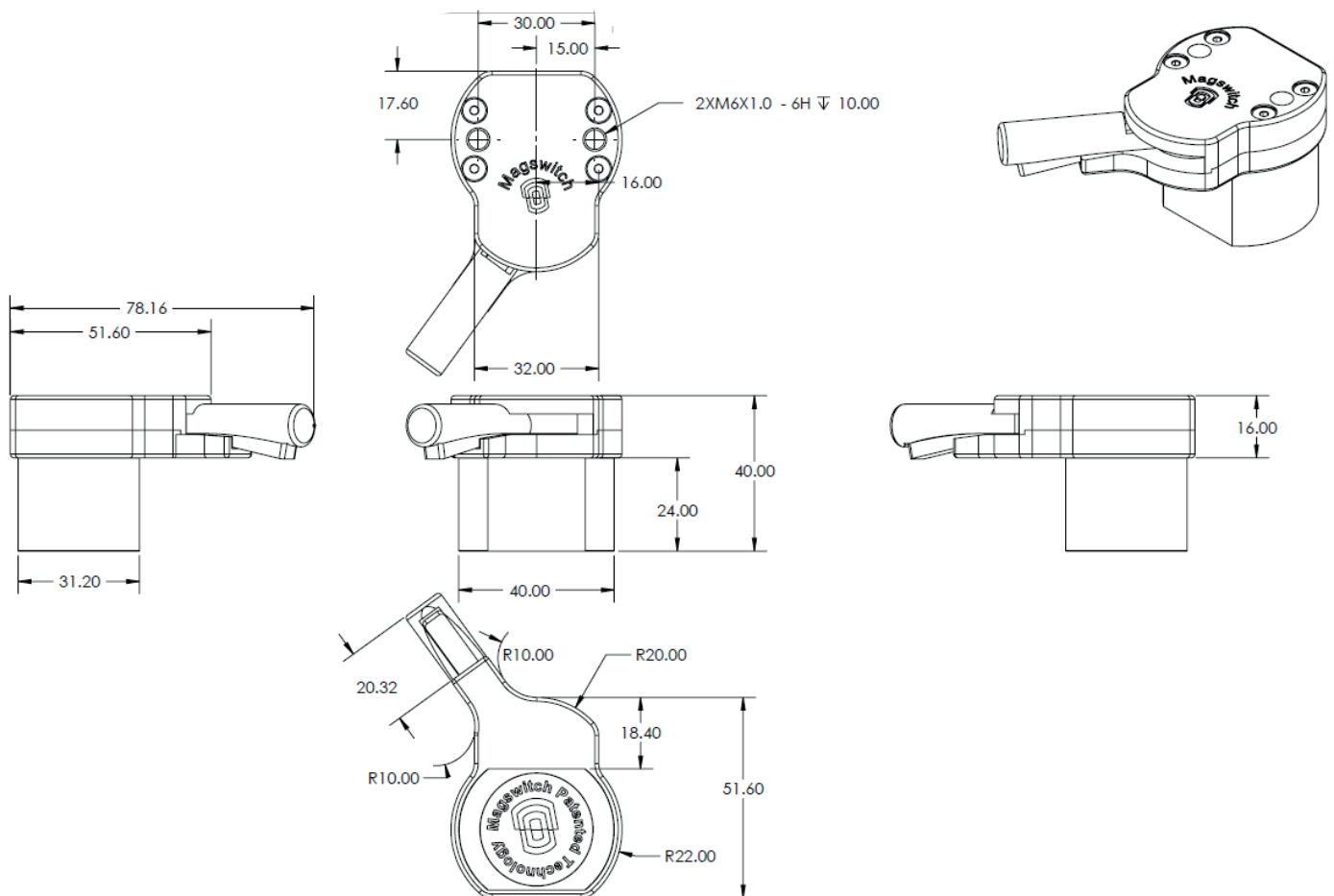
Magswitch Technology Europe GmbH
cs@magswitch.com | www.magswitch.com

Subject to technical and color changes. No liability for errors and misprints assumed. © Magswitch Technology Europe 2024

MagMount 150

P/N: 8100579

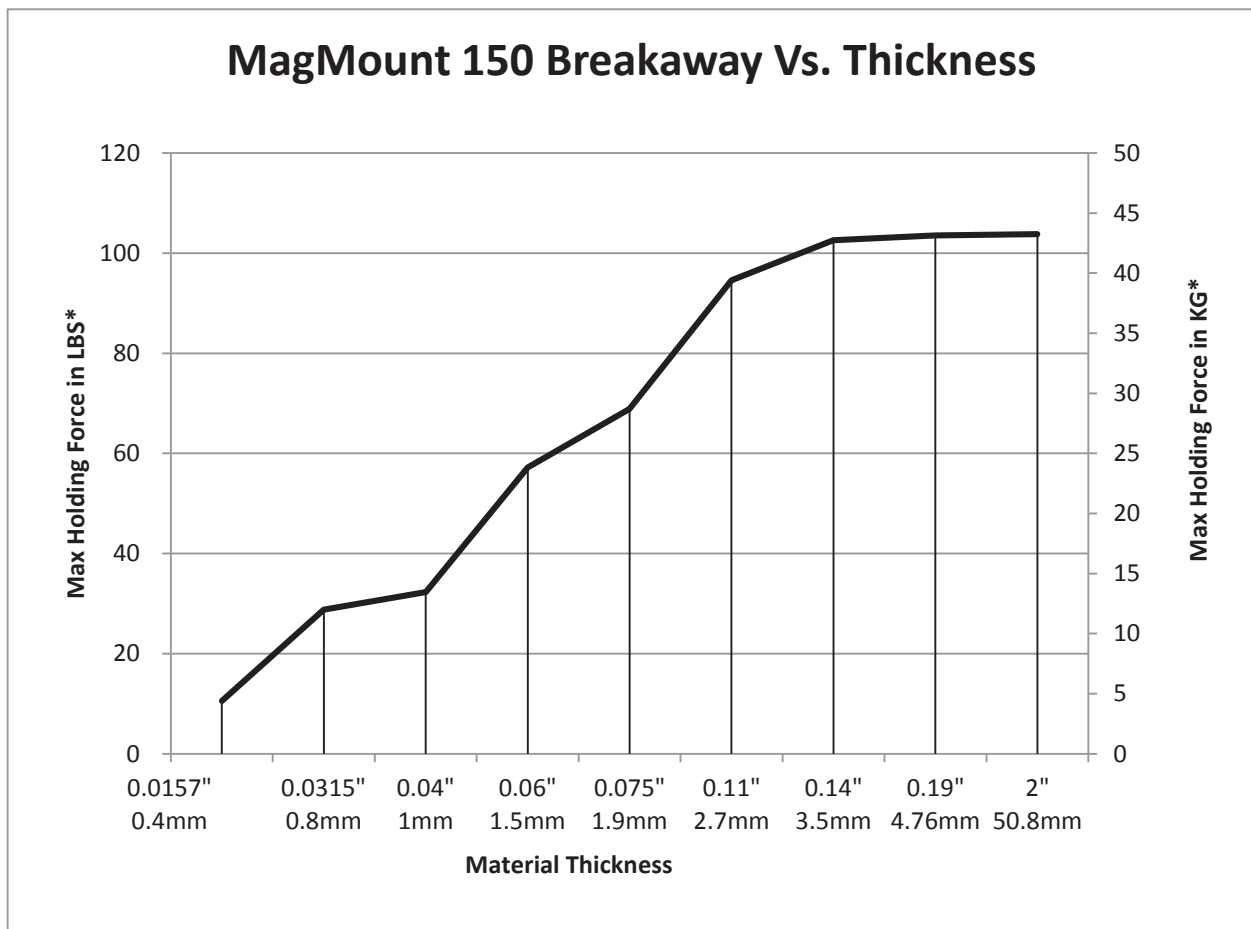
Drawings



MagMount 150

P/N: 8100579

Breakaway Data



* Max Breakaway determined in laboratory environment on 2" thick SAE1018 Steel with surface roughness 63 micro inches. Many factors contribute to the actual breakaway force in each application. Always test the magswitch in each application before deployment. Refer to the magswitch information booklet for more information.

MagMount 235

P/N: 8100451

Tool Features

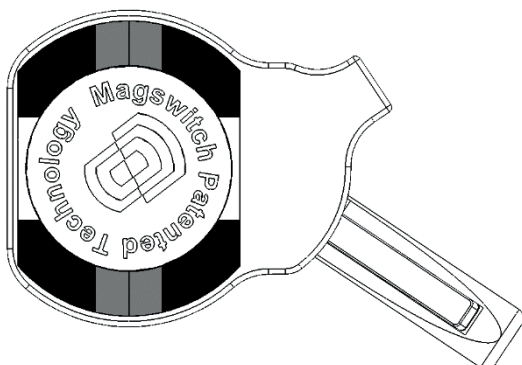
The Magswitch MagMount is a single lever operation switchable magnet that allows for easy movement and placement of a tool. The top mount magnets feature two magnets are ideal for supporting fixtures over a distance. The fixed bar magnet is for flat steel, the swivel bar magnet is for round or uneven shapes.



WARNING!
DO NOT OPERATE UNLESS IN
CONTACT WITH FERROUS TARGET

Specifications

Max Breakaway *	235 lbs	106 kg
Full Saturation Thickness	3/16"	4.75 mm
Net Weight	1.2 lbs	0.5 kg
Overall Height	98 mm	
Magnetic Pole Footprint	56 mm x 42 mm	



WORKING SURFACE
BLACK=BEST
GRAY=MODERATE

* Max Breakaway determined in laboratory environment on 2" thick SAE1018 Steel with surface roughness 63 micro inches. Many factors contribute to the actual breakaway force in each application. Always test the magswitch in each application before deployment. Refer to the magswitch information booklet for more information.

MAGMOUNT 235
8100451

Doc Num 01

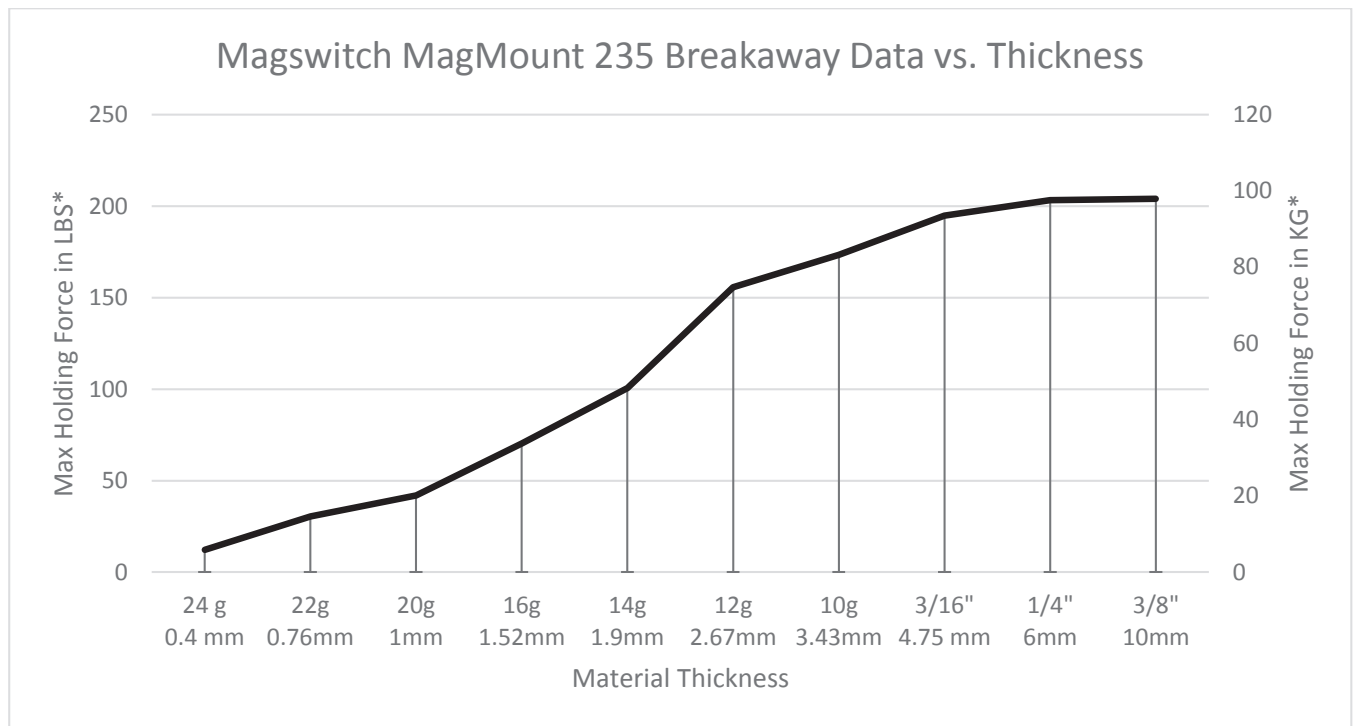
Magswitch Technology Europe GmbH
cs@magswitch.com | www.magswitch.com

Subject to technical and color changes. No liability for errors and misprints assumed. © Magswitch Technology Europe 2024

MagMount 235

P/N: 8100451

Breakaway Data



MagMount 300

P/N: 8100595

Tool Features

The Magswitch MagMount 300 is a single lever operation switchable magnet that allows for easy movement and placement of a tool. It is ideal for mounting fixtures and attachments to a ferrous surface with strong hold. The actuation lever has a locking mechanism to avoid accidental release. Top threaded holes allow this to be a versatile magnetic mount.



WARNING!
DO NOT OPERATE UNLESS IN
CONTACT WITH FERROUS TARGET

Specifications

Max Breakaway *	246 lbs	111 kg
Full Saturation Thickness	3/16 in	4.75 mm
Net Weight	1.2 lbs	0.5 kg
Overall Height	1.7 in	43.8 mm
Magnetic Pole Footprint	71.8 x 51.5 mm	



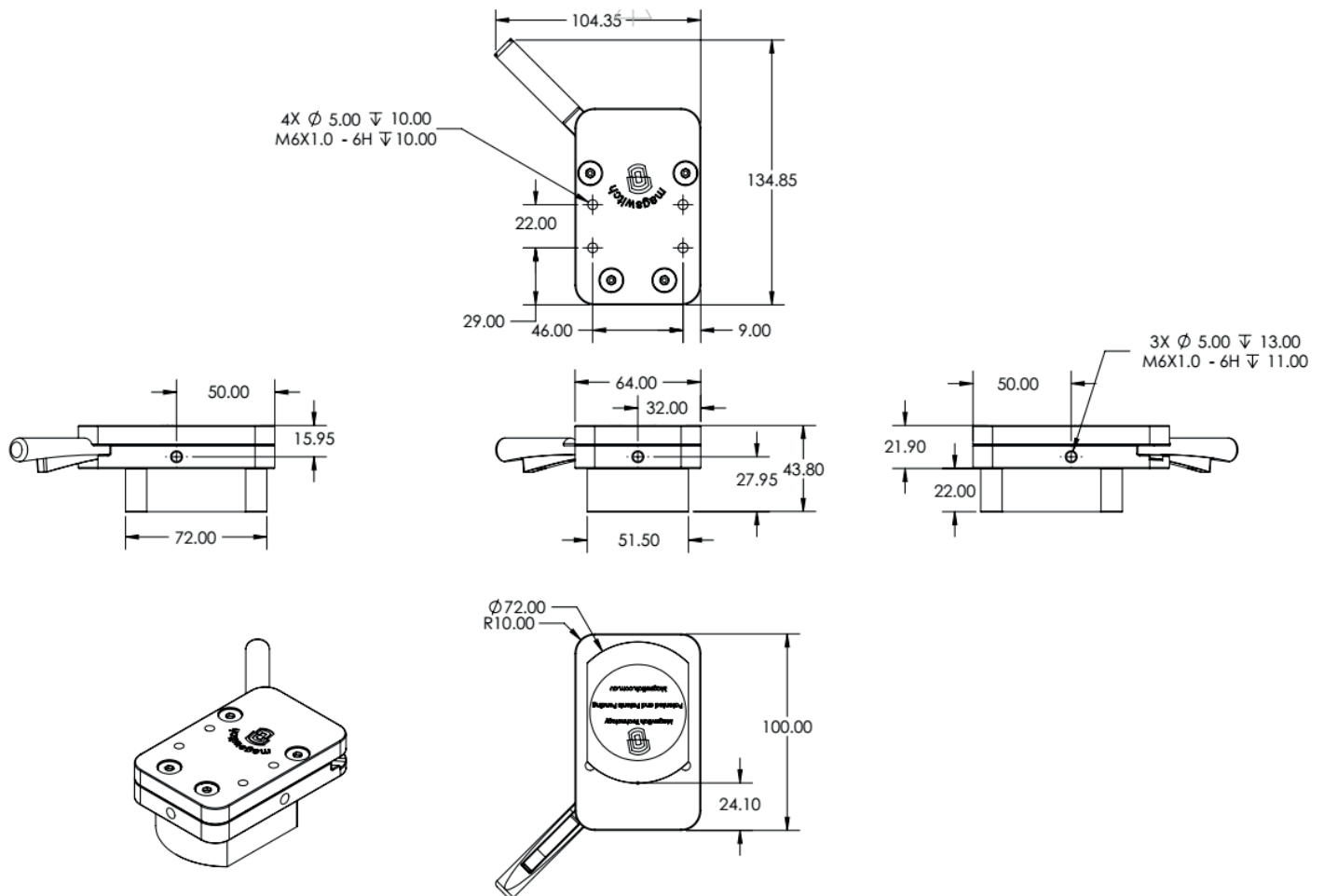
WORKING SURFACE
BLACK=BEST
GRAY=MODERATE

* Max Breakaway determined in laboratory environment on 2" thick SAE1018 Steel with surface roughness 63 micro inches. Many factors contribute to the actual breakaway force in each application. Always test the magswitch in each application before deployment. Refer to the magswitch information booklet for more information.

MagMount 300

P/N: 8100595

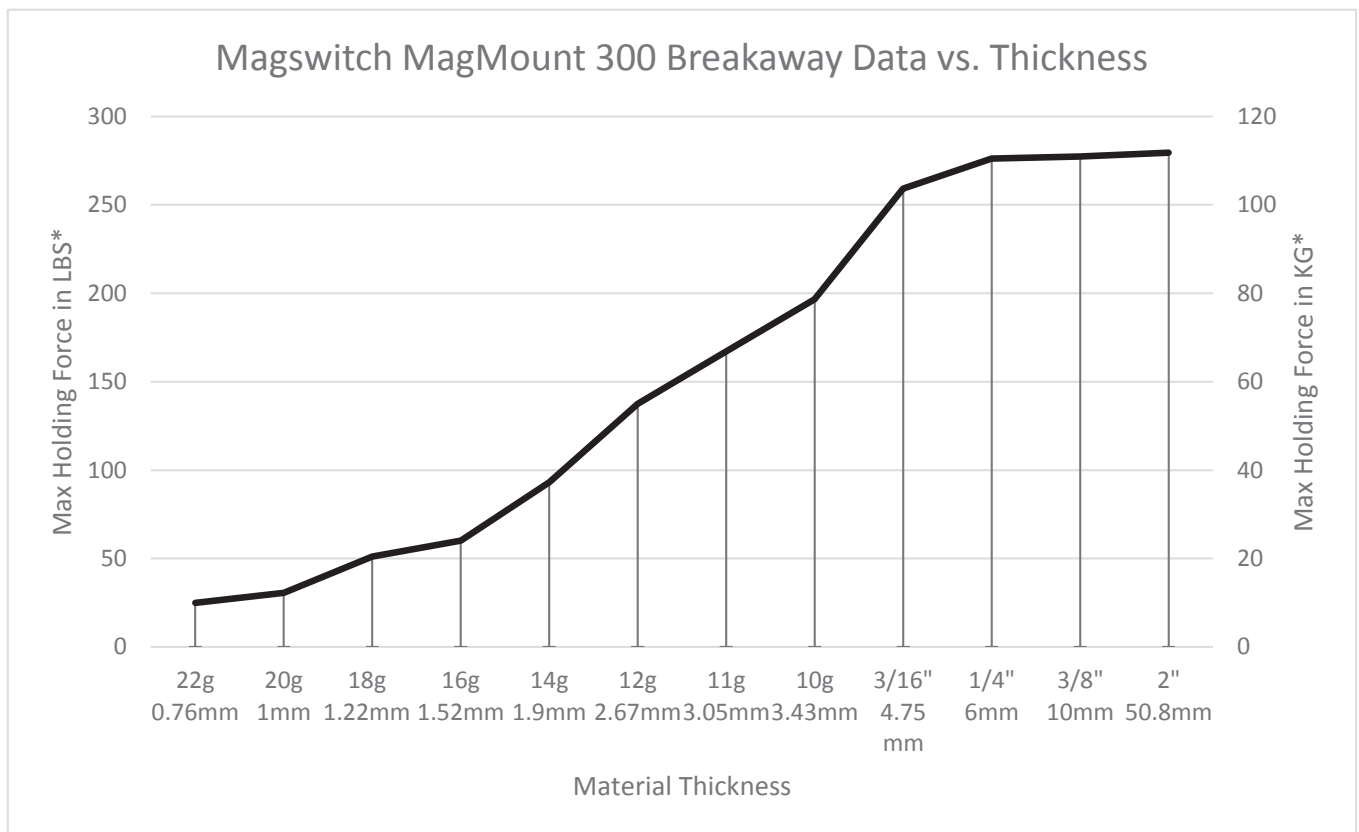
Drawings



MagMount 300

P/N: 8100595

Breakaway Data



* Max Breakaway determined in laboratory environment on 2" thick SAE1018 Steel with surface roughness 63 micro inches. Many factors contribute to the actual breakaway force in each application. Always test the magswitch in each application before deployment. Refer to the magswitch information booklet for more information.

MagMount 400

P/N: 8100523

Tool Features

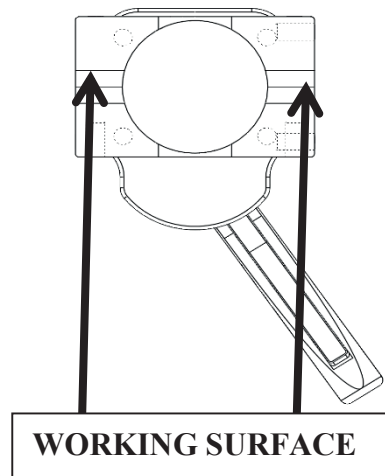
The Magswitch MagMount is a single lever operation switchable magnet that allows for easy movement and placement of a tool. The top mount magnets feature two magnets are ideal for supporting fixtures over a distance. The fixed bar magnet is for flat steel, the swivel bar magnet is for round or uneven shapes.



WARNING!
DO NOT OPERATE UNLESS IN
CONTACT WITH FERROUS TARGET

Specifications

Max Breakaway *	400 lbs	182 kg
Full Saturation Thickness	1/4"	6 mm
Net Weight	1.2 lbs	0.5 kg
Overall Height	65 mm	
Magnetic Pole Footprint	64 mm x 41.26 mm	

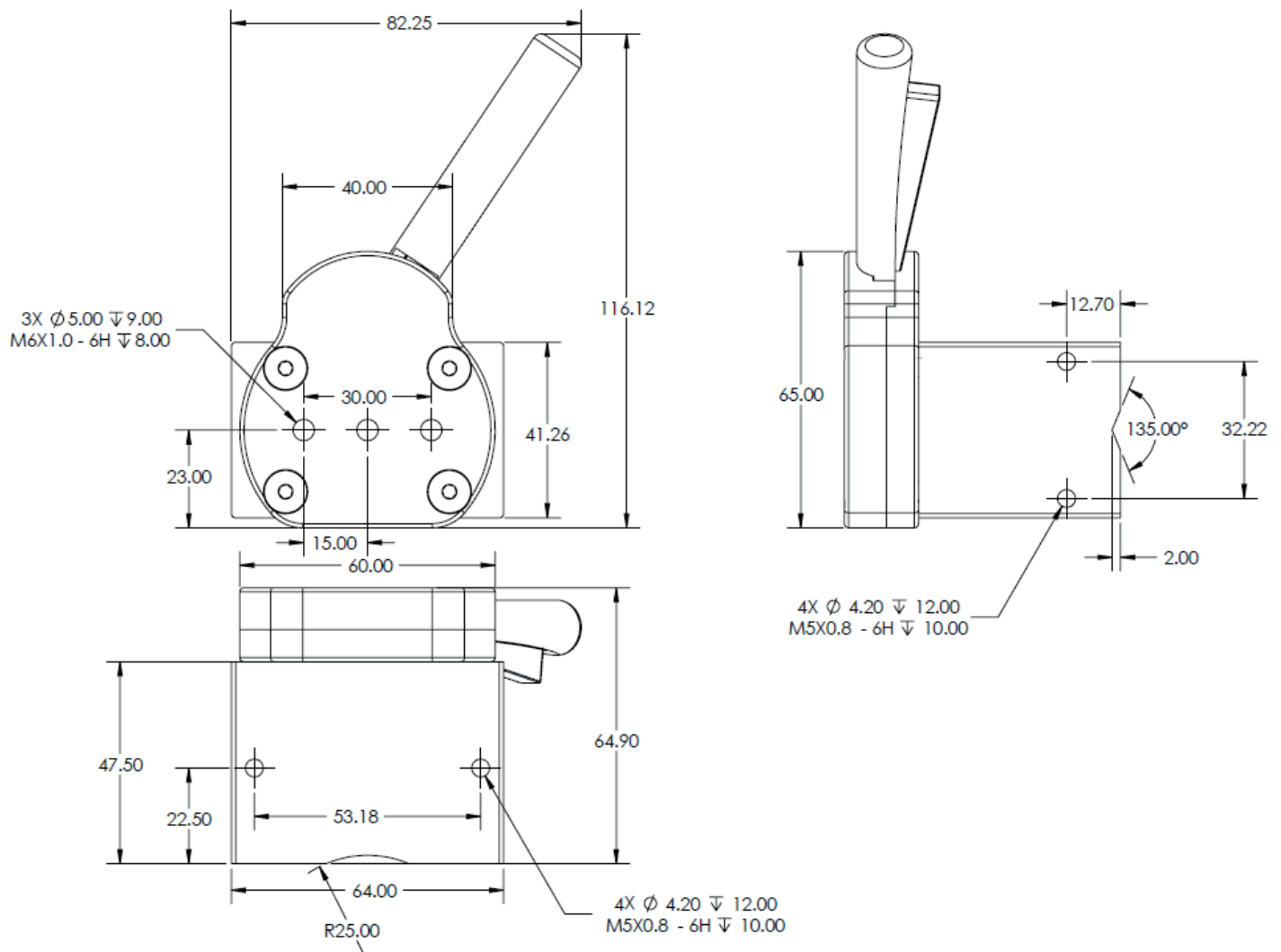


* Max Breakaway determined in laboratory environment on 2" thick SAE1018 Steel with surface roughness 63 micro inches. Many factors contribute to the actual breakaway force in each application. Always test the magswitch in each application before deployment. Refer to the magswitch information booklet for more information.

MagMount 400

P/N: 8100523

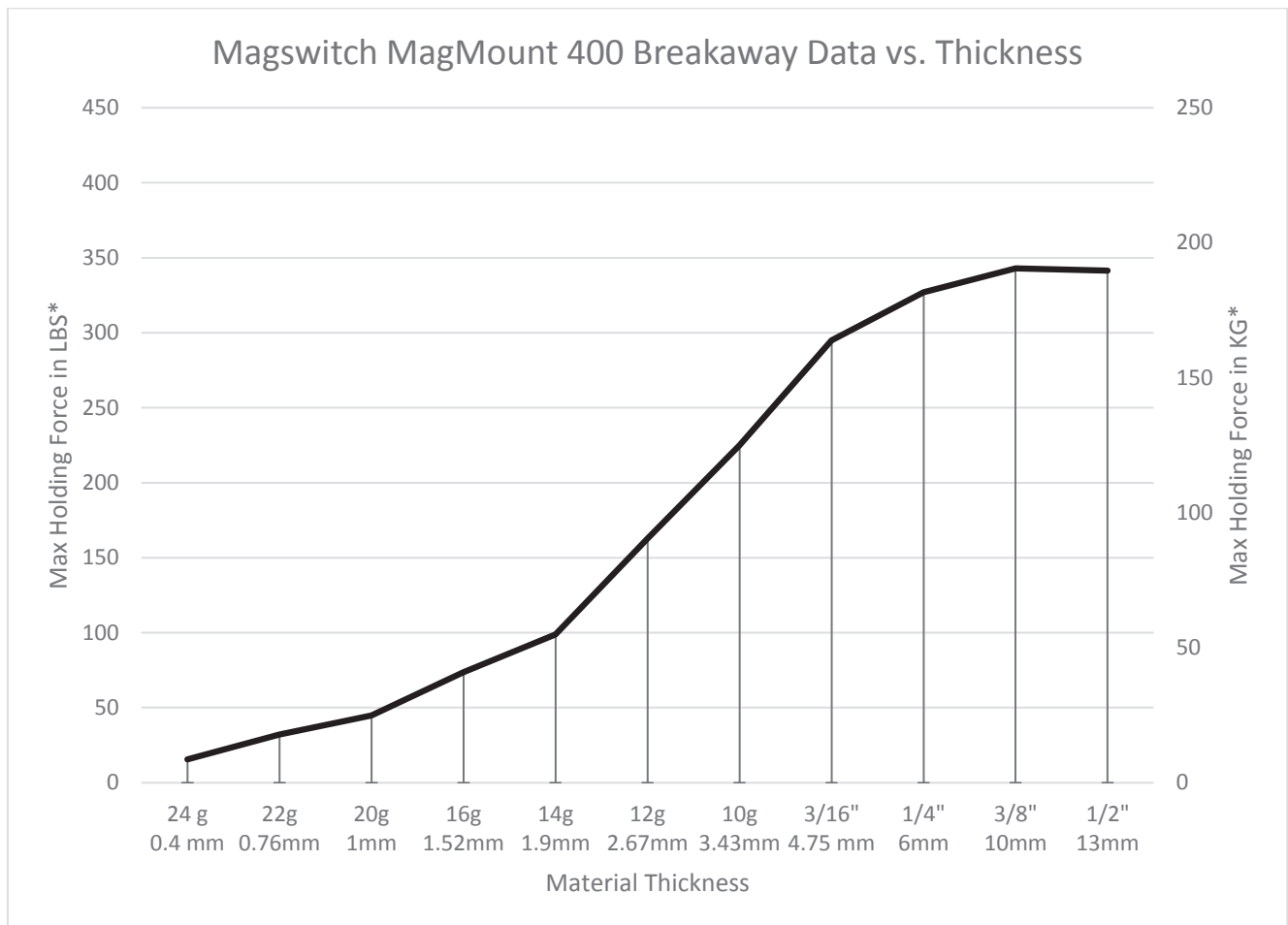
Drawings



MagMount 400

P/N: 8100523

Breakaway Data



MagMount 600

P/N: 8100580

Tool Features

The Magswitch MagMount is a single lever operation switchable magnet that allows for easy movement and placement of a tool. Each features multiple threaded holes for attaching fixtures and supporting loads. The flat working faces grip tightly on flat steel, while the curved surfaces contact round or uneven shapes.



WARNING!
DO NOT OPERATE UNLESS IN
CONTACT WITH FERROUS TARGET

Specifications

Maximum Breakaway Force ^{1,2,4}	521 lbs	236 kg
Maximum Shear ^{1,2,4}	104 lbs	47 kg
Full Saturation Thickness	3/8 in	9.5 mm
Overall Height (Max)	2.8 in	72.0 mm
Overall Length	5.2 in	132.9 mm
Overall Width	4.1 in	104.4 mm
Net Weight	3 lbs	2 kg
Magnetic Pole Footprint	3.0 x 2.0 in	75.0 x 51.5 mm

Material Thickness - mm (in)	0.4 (0.016)	0.8 (0.031)	1.5 (0.059)	2.7 (0.106)	3.5 (0.138)	4.76 (0.187)	6.35 (0.250)	9.5 (0.374)	12.7 (0.500)	19.5 (0.768)	25.4 (1.000)	50.8 (2.000)
Maximum Force ⁴ - kg (lbs)	8.9 (20)	12.1 (27)	35.7 (79)	72.2 (159)	106.8 (236)	144.0 (317)	211.5 (466)	217.5 (480)	219.3 (484)	232.3 (512)	237.0 (522)	237.0 (522)
Approx. Maximum Shear ⁴ - kg (lbs)	1.8 (4)	2.4 (5)	7.1 (16)	14.4 (32)	21.4 (47)	28.8 (63)	42.3 (93)	43.5 (96)	43.9 (97)	46.5 (102)	47.4 (104)	47.4 (104)

1. Determined in laboratory environment on 2" thick SAE1018 Steel with surface roughness 63 micro inches with optimized pole shoes. Many factors contribute to the actual breakaway force and safe working load in each application. Consult a Magswitch Applications Engineer and test the Magswitch in each application before deployment.

2. All data applies to unit with flat pole shoes installed.

3. Values may vary by +/- 5%.

4. Maximum forces listed above are not safe lifting forces. Designer must take into account safety factor when specifying tool. Magswitch recommends SWL = 5:1 for most applications.

Magswitch Technology Europe GmbH
cs@magswitch.com | www.magswitch.com

MAGMOUNT 600
8100580

Doc Num 01

Subject to technical and color changes. No liability for errors and misprints assumed. © Magswitch Technology Europe 2024

MagMount 600

P/N: 8100580

Drawings

