

PINSTAMP® TMM5400

Multi-Pin Power for Maximum Productivity



Key Features

Multi-Pin Speed – Eight marking pins deliver faster cycle times and deeper marks, perfect for high-production.

Versatile Marking – Permanently marks steel, aluminum, plastic, and more, with crisp, durable results.

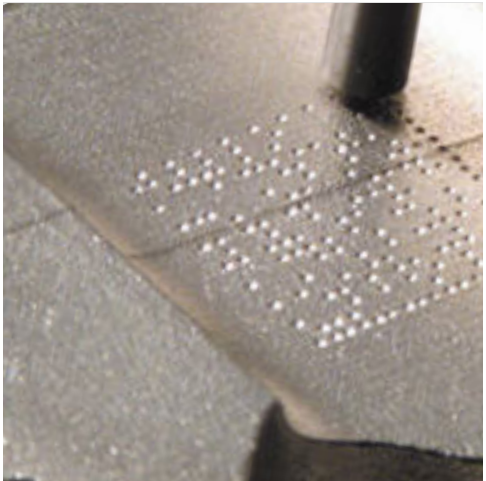
Precision Control – X/Y-traversing system with dual stepper motors ensures accurate, high-quality marks every time.

Industrial Durability – Built for tough environments, with UL, CSA, CE, and RoHS compliance.

Flexible Configurations – Choose 6mm or 12mm pin spacing to match your marking needs.

Low Maintenance – Non-lubricated lightweight pin cartridges and a reliable pneumatic system keep downtime low.

Performance Specifications	
Material Compatibility	Soft plastics to hardened steel (up to RC60)
Marking Depth	0.001 in to 0.018 in (0.03 mm to 0.34 mm)
Pattern Storage	Hundreds of patterns
Connectivity	PLC, host computer interface
Available Models	TMM5400



Options + Accessories

Marking Head Extension Cables

Mounting Post

System Computer

Touch Screen Controller

Various Marking Pins

Multi-Pin Speed

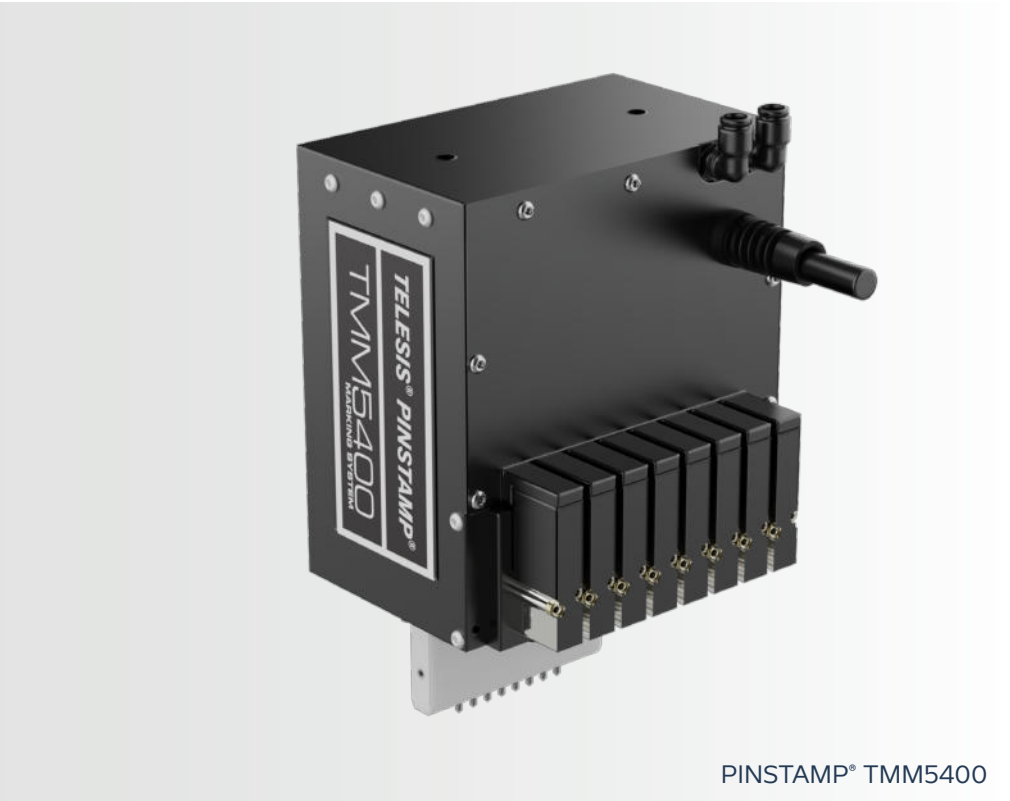
The TMM5400 is built for speed and efficiency, using eight marking pins to create clear, permanent marks in record time. Whether you’re marking steel, aluminum, or plastic, this multi-pin system ensures deep, precise engraving—ideal for high-volume manufacturing.

Marking Area

36 mm x 13 mm

Head Dimensions

H x W x D
140 mm x 127 mm x 104 mm



PINSTAMP® TMM5400

Precision You Can Trust

With advanced motion control, the TMM5400 places each mark exactly where it’s needed, ensuring sharp, readable text, logos, and barcodes. It even adapts to curved and uneven surfaces, delivering consistent results every time. Choose from different pin configurations to get the perfect balance of speed and detail for your application.

Built for Industry

Designed to withstand demanding industrial conditions, the TMM5400 works in a wide range of temperatures and integrates easily into your production line. Paired with the TMC470 controller, it offers user-friendly software, flexible setup options, and reliable performance day after day. When you need high-speed, high-precision marking, the TMM5400 is the tool you can count on.