

Boomer Angle 400

P/N: 8100453

Tool Features

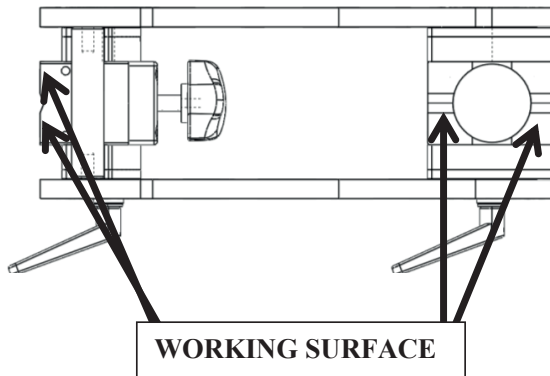
The Magswitch BoomerAngles offer virtually unlimited angles. With a rotating MagSquare at the end of each axis. Magswitch BoomerAngles offers not only a fixed 90 degree angle on the inside and outside, but are adjustable to any angle in between. Featuring the benefits of Magswitch including incredible power and precision control, Magswitch BoomerAngles are easy to use and can be used with larger and heavier steel.

WARNING!
DO NOT OPERATE UNLESS IN
CONTACT WITH FERROUS TARGET



Specifications

Max Breakaway *	400 lbs	181 kg
Full Saturation Thickness	0.1345 in	3.43 mm
2:1 Shear Working Load *	20 lbs	9 kg
Net Weight	6.6 lbs	3.0 kg
Overall Height	181 mm	
Magnetic Pole Footprint	64 mm x 41.26 mm	

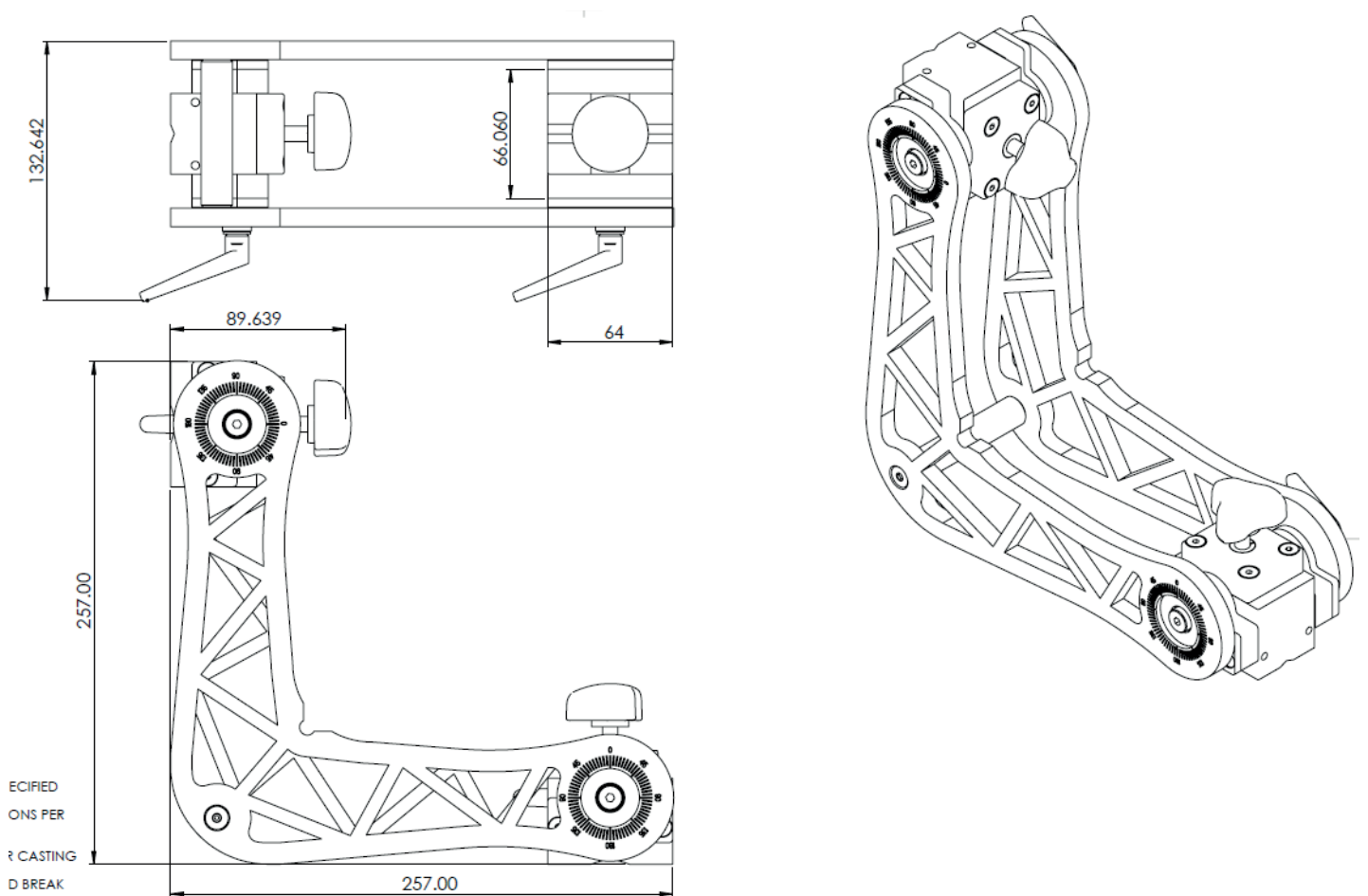


* Max Breakaway determined in laboratory environment on 2" thick SAE1018 Steel with surface roughness 63 micro inches. Many factors contribute to the actual breakaway force in each application. Always test the magswitch in each application before deployment. Refer to the magswitch information booklet for more information.

Boomer Angle 400

P/N: 8100453

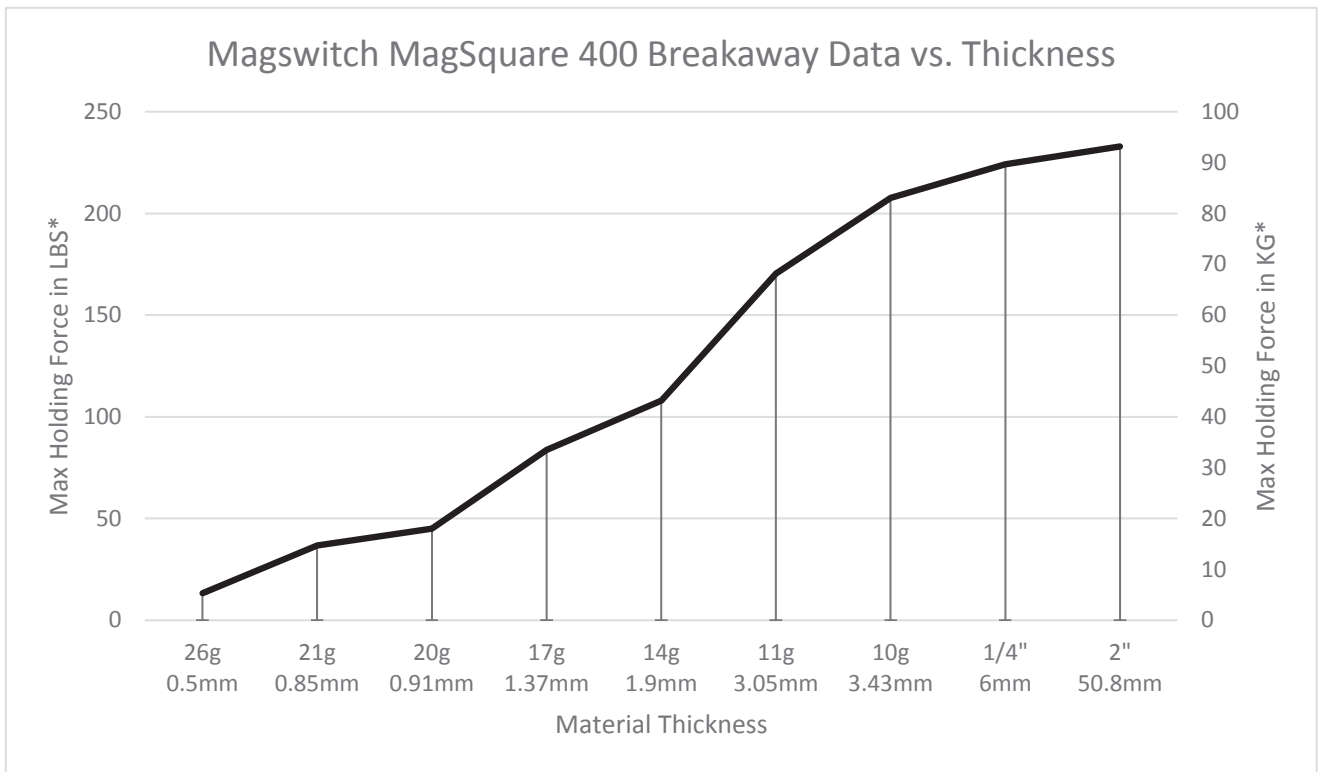
Drawings



Boomer Angle 400

P/N: 8100453

Breakaway Data



* Max Breakaway determined in laboratory environment on 2" thick SAE1018 Steel with surface roughness 63 micro inches. Many factors contribute to the actual breakaway force in each application. Always test the magswitch in each application before deployment. Refer to the magswitch information booklet for more information.

Boomer Angle 600

P/N: 8100090

Tool Features

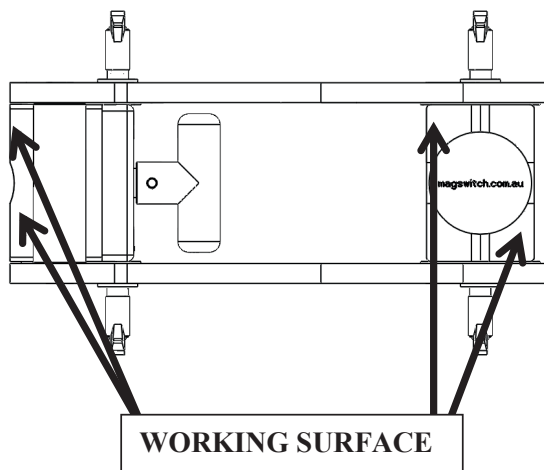
The Magswitch BoomerAngles offer virtually unlimited angles. With a rotating MagSquare at the end of each axis. Magswitch BoomerAngles offers not only a fixed 90 degree angle on the inside and outside, but are adjustable to any angle in between. Featuring the benefits of Magswitch including incredible power and precision control, Magswitch BoomerAngles are easy to use and can be used with larger and heavier steel.

WARNING!
DO NOT OPERATE UNLESS IN
CONTACT WITH FERROUS TARGET



Specifications

Max Breakaway *	600 lbs	272 kg
Full Saturation Thickness	3/8"	10 mm
2:1 Shear Working Load *	61 lbs	27 kg
Net Weight	9.7 lbs	4.4 kg
Overall Height	272 mm	
Magnetic Pole Footprint	75 mm x 51.5 mm	

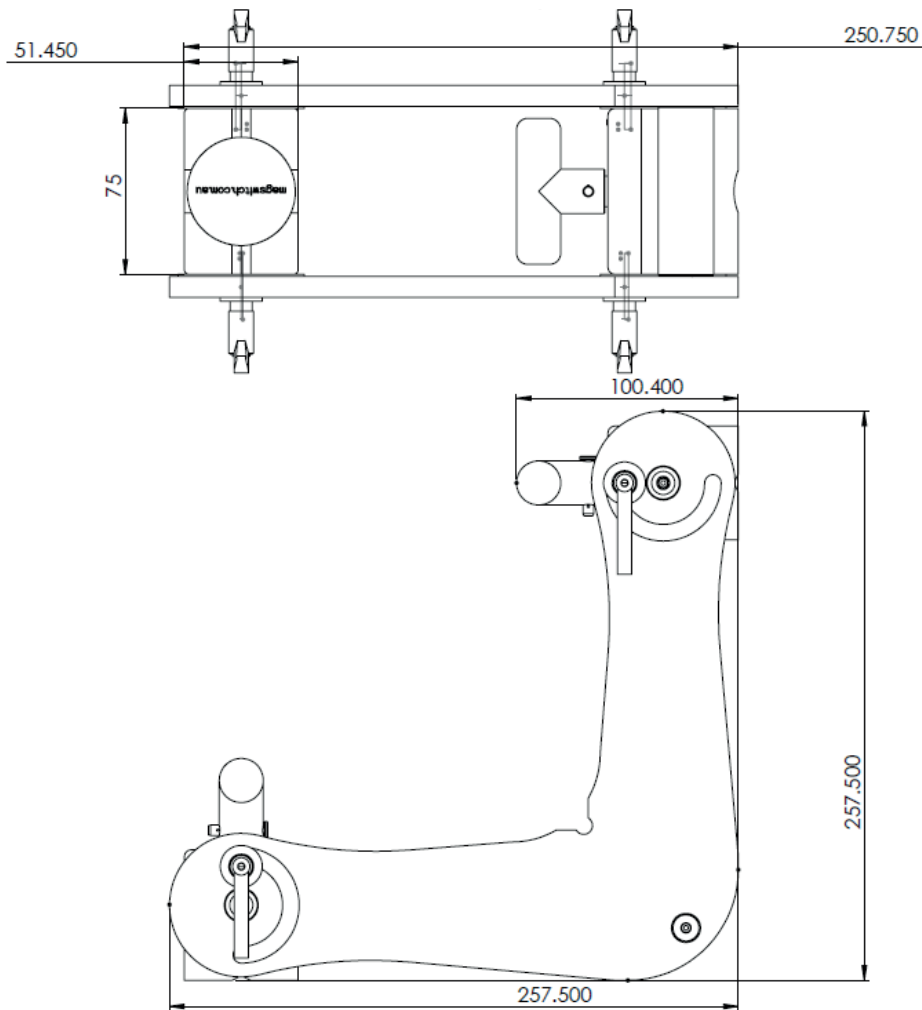


* Max Breakaway determined in laboratory environment on 2" thick SAE1018 Steel with surface roughness 63 micro inches. Many factors contribute to the actual breakaway force in each application. Always test the magswitch in each application before deployment. Refer to the magswitch information booklet for more information.

Boomer Angle 600

P/N: 8100090

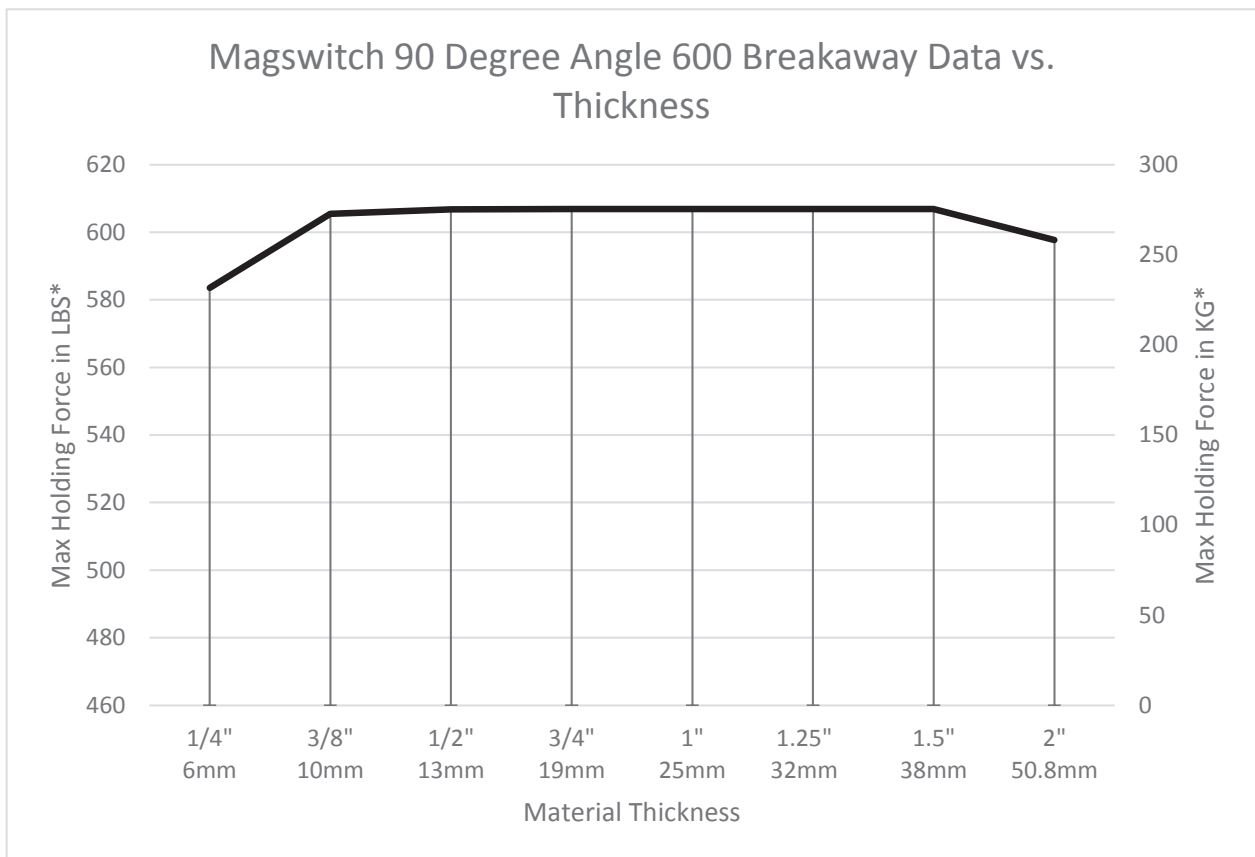
Drawings



Boomer Angle 600

P/N: 8100090

Breakaway Data



* Max Breakaway determined in laboratory environment on 2" thick SAE1018 Steel with surface roughness 63 micro inches. Many factors contribute to the actual breakaway force in each application. Always test the magswitch in each application before deployment. Refer to the magswitch information booklet for more information.