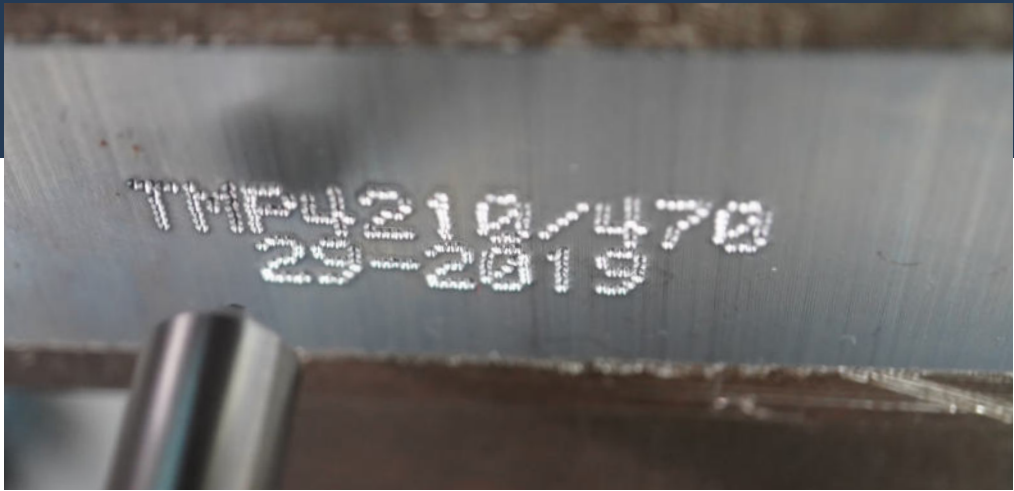


PINSTAMP® TMP4210

Lightweight and Compact Hand-held



Key Features

Rugged, Low-Maintenance X/Y Platform: Built to endure tough conditions with minimal upkeep.

Compact, Contaminant-Resistant Head: Perfect for production lines where reliability is critical.

Material Versatility: Marks a wide range of materials, including plastics and hardened steel up to RC60.

Easy Integration: Seamlessly interface with PLCs and host computers to streamline operations.

Interchangeable Marking Pin Sizes: Adjust marking depth between 0.001" to 0.018" (0.03 mm to 0.34 mm)

Floating Pin Technology: Handles surface irregularities for precise, consistent marking.

Automated Marking Functions: Automatically generate serial numbers, time, date, and shift codes.

Performance Specifications

Material Compatibility	Soft plastics to hardened steel (up to RC60)
Marking Depth	0.001 in to 0.018 in (0.03 mm to 0.34 mm)
Pattern Storage	Hundreds of patterns
Connectivity	PLC, host computer interface
Available Models	TMP4210

Options + Accessories

- Marking Head Extension Cables
- System Computer
- Touch Screen Controller
- Various Marking Pins

Smart Performance

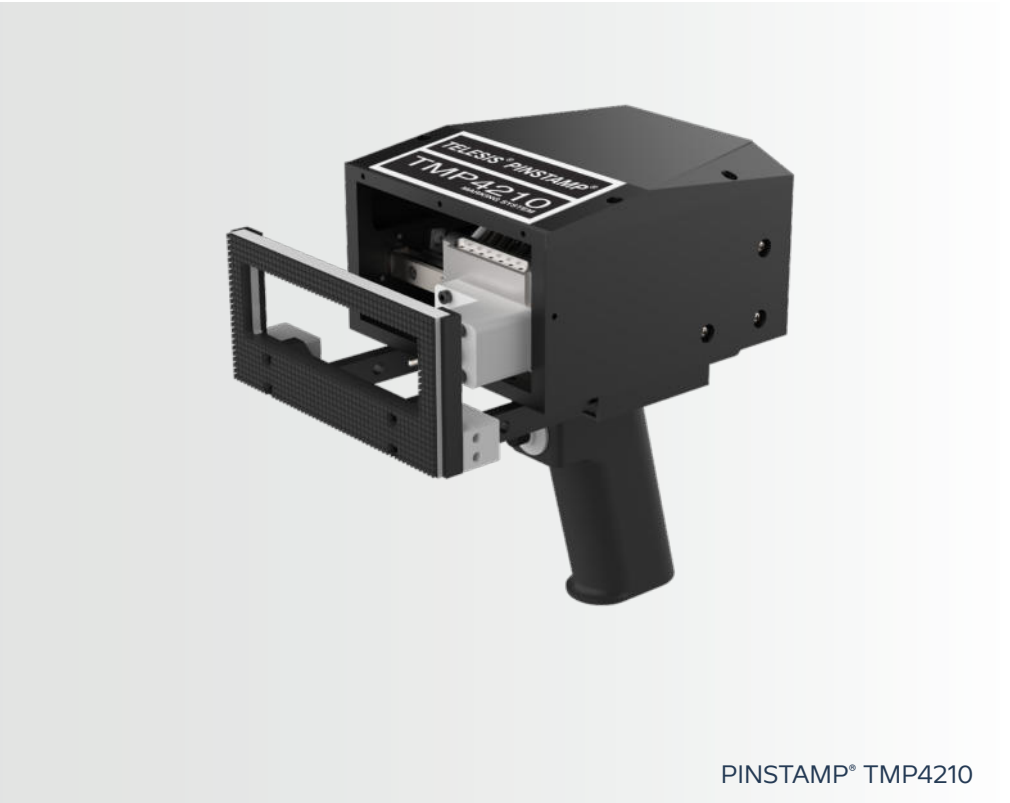
With high-speed marking with up to four characters per second and a dot density of 200 dots-per-inch, the TMP4210 supports automated serial numbers, time, date, and shift codes. Rugged IP/NEMA-rated controllers provide long-term performance for modern manufacturing.

Marking Area



Head Dimensions

H x W x D (25S Pin)					
8.28 in	x	5.55 in	x	8.19 in	
210.18 mm	x	140.9 mm	x	208 mm	



Compact Design

The Telesis TMP4210 is perfect for smaller environments where space and movement are restricted. Its lightweight construction allows operators to comfortably handle the marker for extended periods, making it ideal for portable, handheld marking. Despite its compact size, it delivers powerful performance in demanding industrial settings.

Portable and Integrated

Designed for maximum flexibility, the TMP4210 functions both as a portable handheld unit and as a stationary marker with a quick-disconnect tool post. It easily adapts to various applications, from marking individual parts to high-volume production lines. With multi-strike capability and multiple pin options, it ensures precise, durable marks on a wide range of materials.