

HAND LIFTER 60-M

P/N: 8100359

Tool Features

The Magswitch Manual Hand Lifter 60-M adds safety and convenience to every workstation. The Magswitch Manual Hand Lifter 60-M lets you pick, place, slide, and reposition steel without using your fingers. No need to touch hot, sharp, or dirty steel. Ideal for small steel handling, dragging sheet, picking, placing and pulling parts out of burn table or handling scrap.



WARNING!
DO NOT OPERATE UNLESS IN
CONTACT WITH FERROUS TARGET

Specifications

Maximum Breakaway Force ^{1,2,4}	217 lb					98.3 kg			
Maximum Shear ^{1,2,4}	48.5 lb					22 kg			
Net Weight	1.7 lb					0.75 kg			
Full Saturation Thickness	0.2"					5 mm			
Minimum De-Stacking Thickness	0.2"					5 mm			
Magnetic Pole Footprint	2.2" x 1.6"					56mm x 41.25mm			
Material Thickness - mm (in)	0.5 (0.02)	0.8 (0.03)	1.0 (0.04)	2.0 (0.08)	3.0 (0.12)	4.0 (0.16)	5.0 (0.20)	6.0 (0.24)	50.0 (2.00)
Maximum Force ^{1,2} - kg (lbs)	8.30 (18.3)	14.50 (32.0)	23.67 (52.2)	45.47 (100.2)	72.57 (160.0)	89.57 (197.5)	98.27 (216.6)	98.30 (216.7)	98.30 (216.7)

1. Determined in laboratory environment on 2" thick SAE1018 Steel with surface roughness 63 micro inches. Many factors contribute to the actual breakaway force and safe working load in each application. Consult a Magswitch Applications Engineer and test the Magswitch in each application before deployment.

2. Determined with SAE1018 Steel L=200mm W=200mm.

3. Values may vary by +/- 5%.

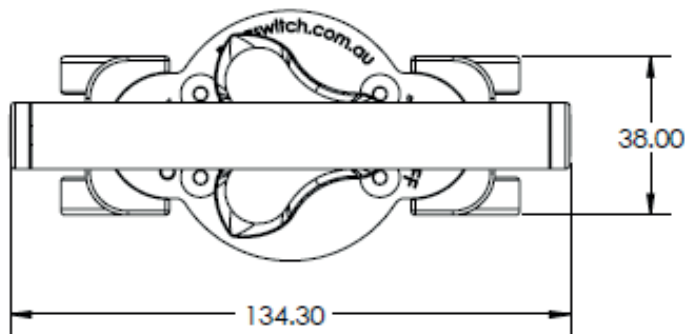
4. Maximum forces listed above are not safe lifting forces. Designer must take into account safety factor when specifying tool. Magswitch recommends SWL = 3:1 for most applications.

$$\text{SWL (Safe Working Load)} = \frac{\text{Maximum Force}^4}{\text{Safety Factor} (\geq 5)}$$

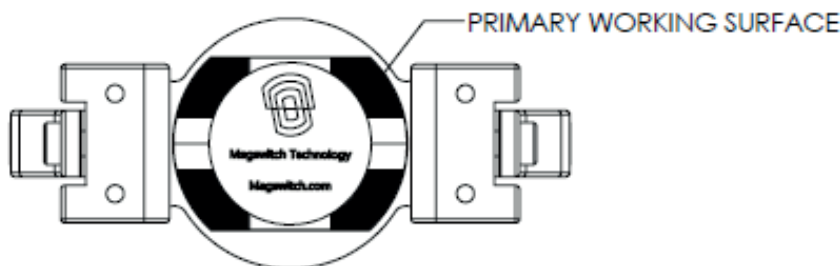
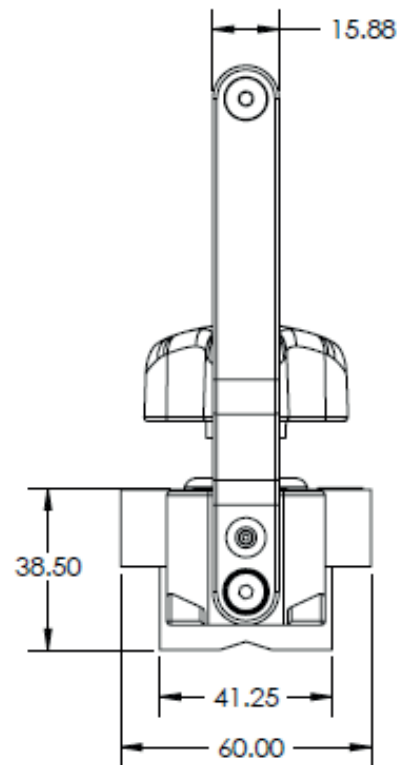
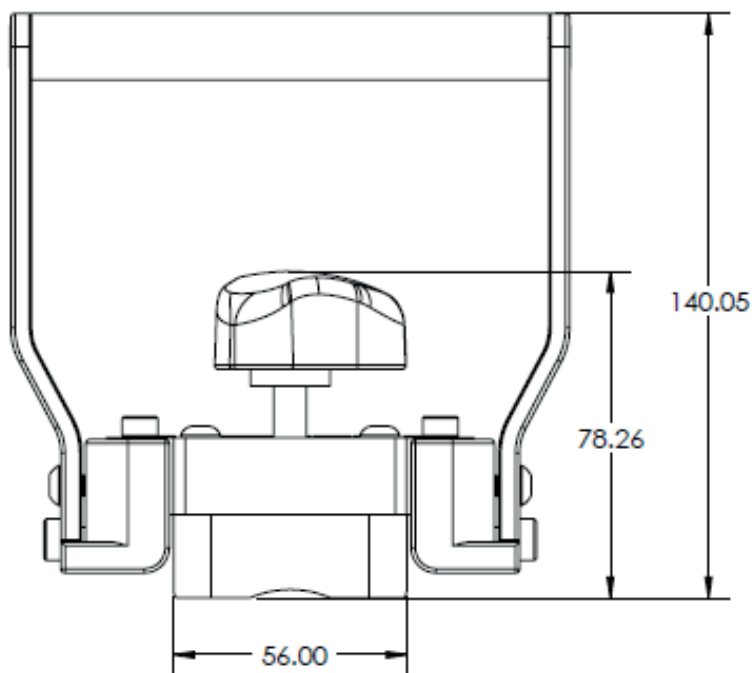
HAND LIFTER 60-M

P/N: 8100359

Drawings



ISO 2768-M	
SIZE (mm)	TOLERANCE
0.5 - 3	±0.1
>3 - 6	+0.1
>6 - 30	+0.2
>30 - 120	±0.3
>120 - 400	+0.5
>400 - 1000	±0.8
>1000 - 2000	±1.2



235 Fixed Manual Hand Lifter

P/N: 8100795

Tool Features

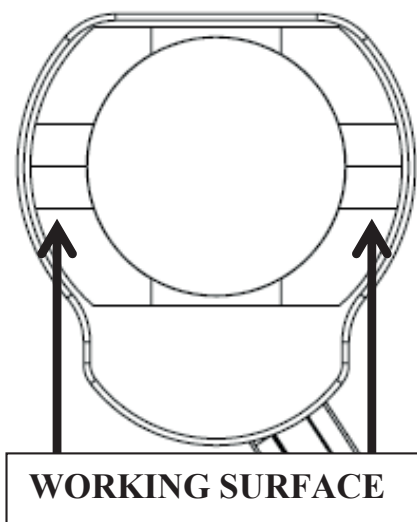
The Magswitch fixed manual hand lifter series allows for safe and convenient lifting. With an ergonomic fixed handle, the 235 hand lifter features a single 90° side-actuation lever with a locking mechanism that prevents accidental release. It is perfect for handling sharp or dirty steel or scrap. It can be used for dragging or handling small steel sheet.



WARNING!
DO NOT OPERATE UNLESS IN
CONTACT WITH FERROUS TARGET

Specifications

Max Breakaway *	235 lbs	106 kg
Full Saturation Thickness	3/16in	4.75mm
Net Weight	1.6 lbs	0.7 kg
Overall Height	4.1in	105.1mm
Magnetic Pole Footprint	56mm x 42 mm	

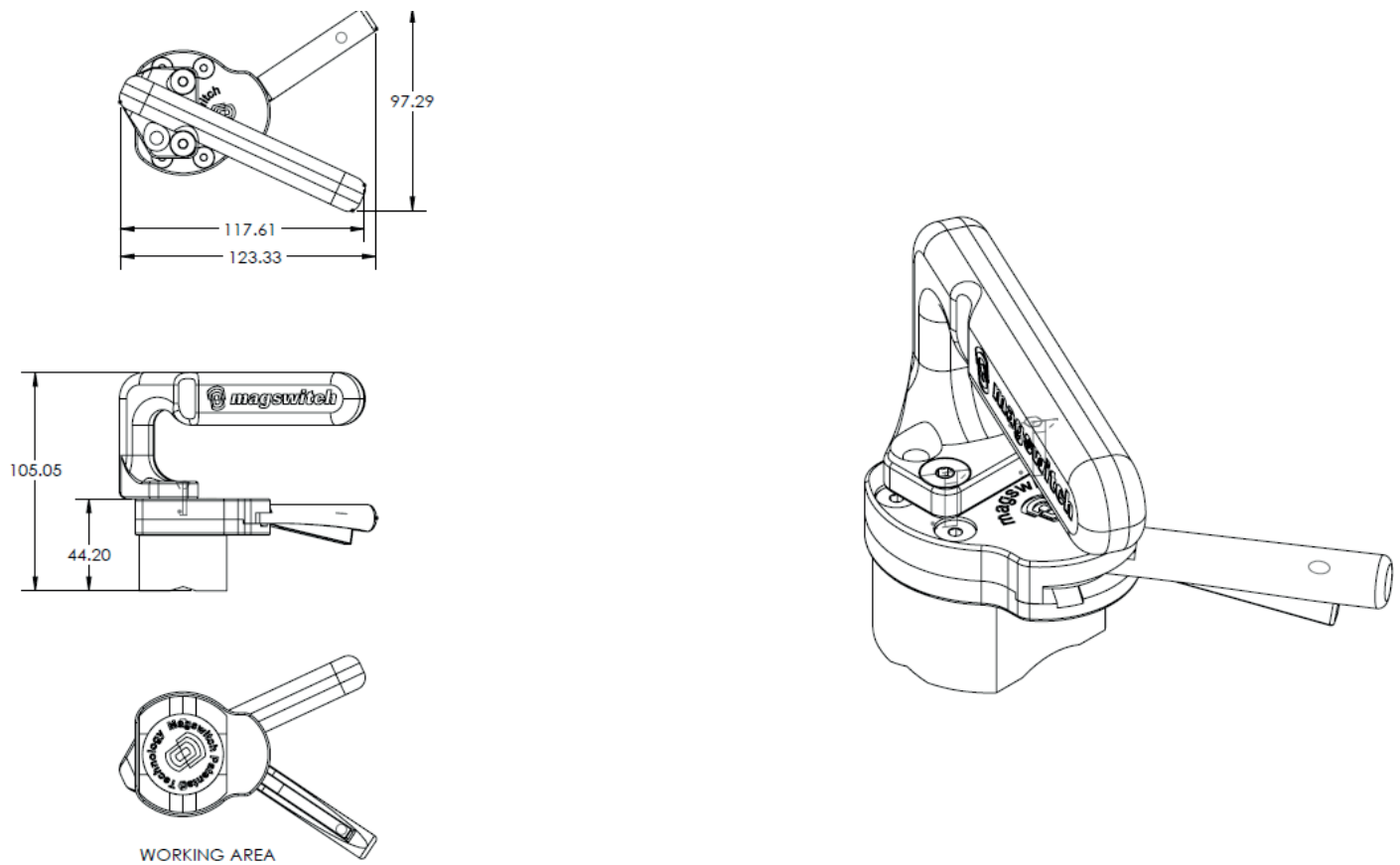


* Max Breakaway determined in laboratory environment on 2" thick SAE1018 Steel with surface roughness 63 micro inches. Many factors contribute to the actual breakaway force in each application. Always test the magswitch in each application before deployment. Refer to the magswitch information booklet for more information.

235 Fixed Manual Hand Lifter

P/N: 8100795

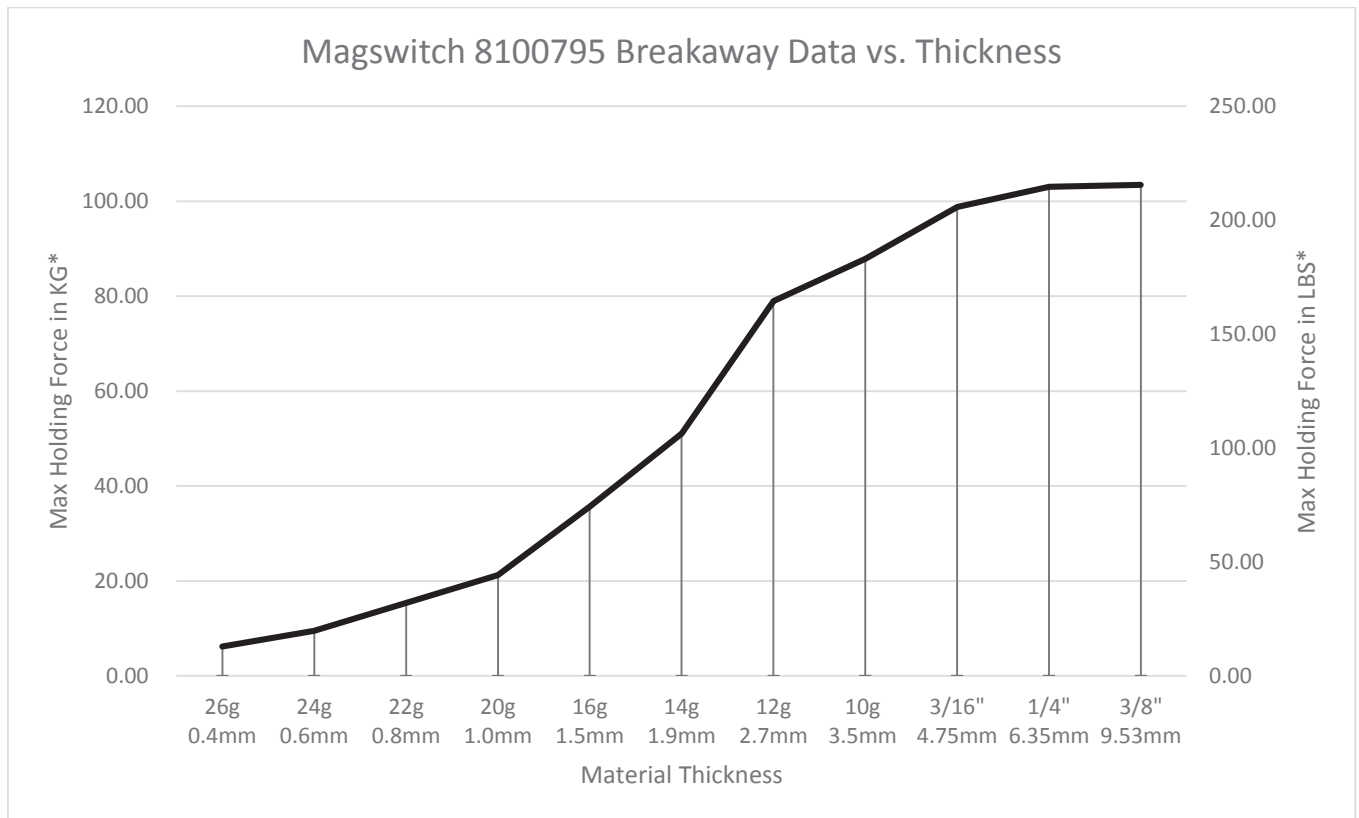
Drawings



235 Fixed Manual Hand Lifter

P/N: 8100795

Safe Working Load



* Max Breakaway determined in laboratory environment on 2" thick SAE1018 Steel with surface roughness 63 micro inches. Many factors contribute to the actual breakaway force in each application. Always test the magswitch in each application before deployment. Refer to the magswitch information booklet for more information.

400 Fixed Manual Hand Lifter

P/N: 8100810

Tool Features

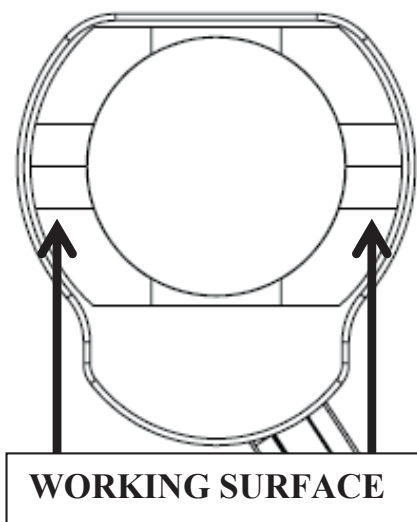
The Magswitch fixed manual hand lifter series allows for safe and convenient lifting. With an ergonomic fixed handle, the 400 hand lifter features a single 90° side-actuation lever with a locking mechanism that prevents accidental release. It is perfect for handling sharp or dirty steel or scrap. It can be used for dragging or handling small steel sheet.

WARNING!
DO NOT OPERATE UNLESS IN
CONTACT WITH FERROUS TARGET



Specifications

Max Breakaway *	390 lbs	177 kg
Full Saturation Thickness	3/8in	9.5mm
Net Weight	2.4 lbs	1.1 kg
Overall Height	5.0in	127.0mm
Magnetic Pole Footprint	67mm x 42 mm	

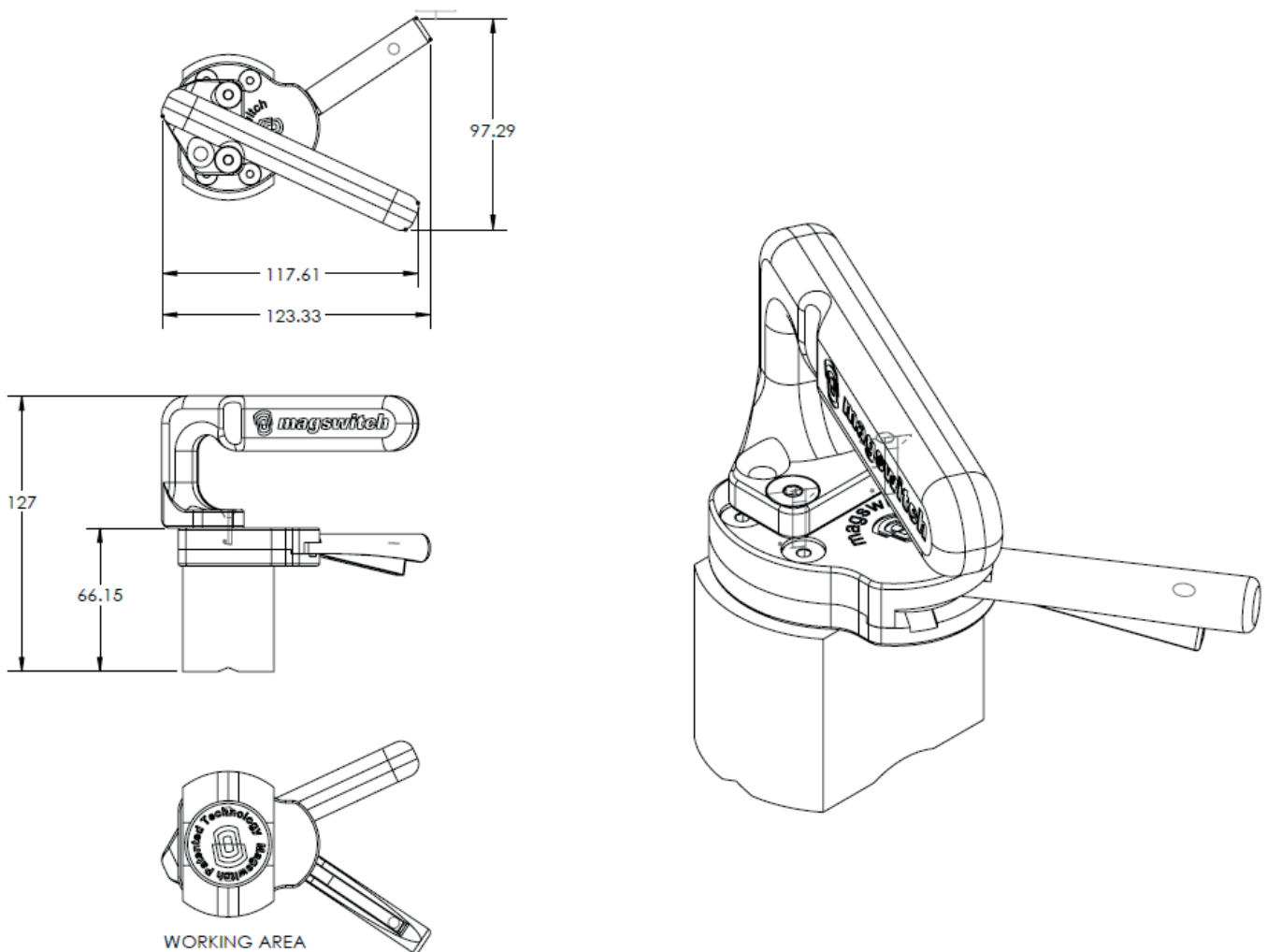


* Max Breakaway determined in laboratory environment on 2" thick SAE1018 Steel with surface roughness 63 micro inches. Many factors contribute to the actual breakaway force in each application. Always test the magswitch in each application before deployment. Refer to the magswitch information booklet for more information.

400 Fixed Manual Hand Lifter

P/N: 8100810

Drawings

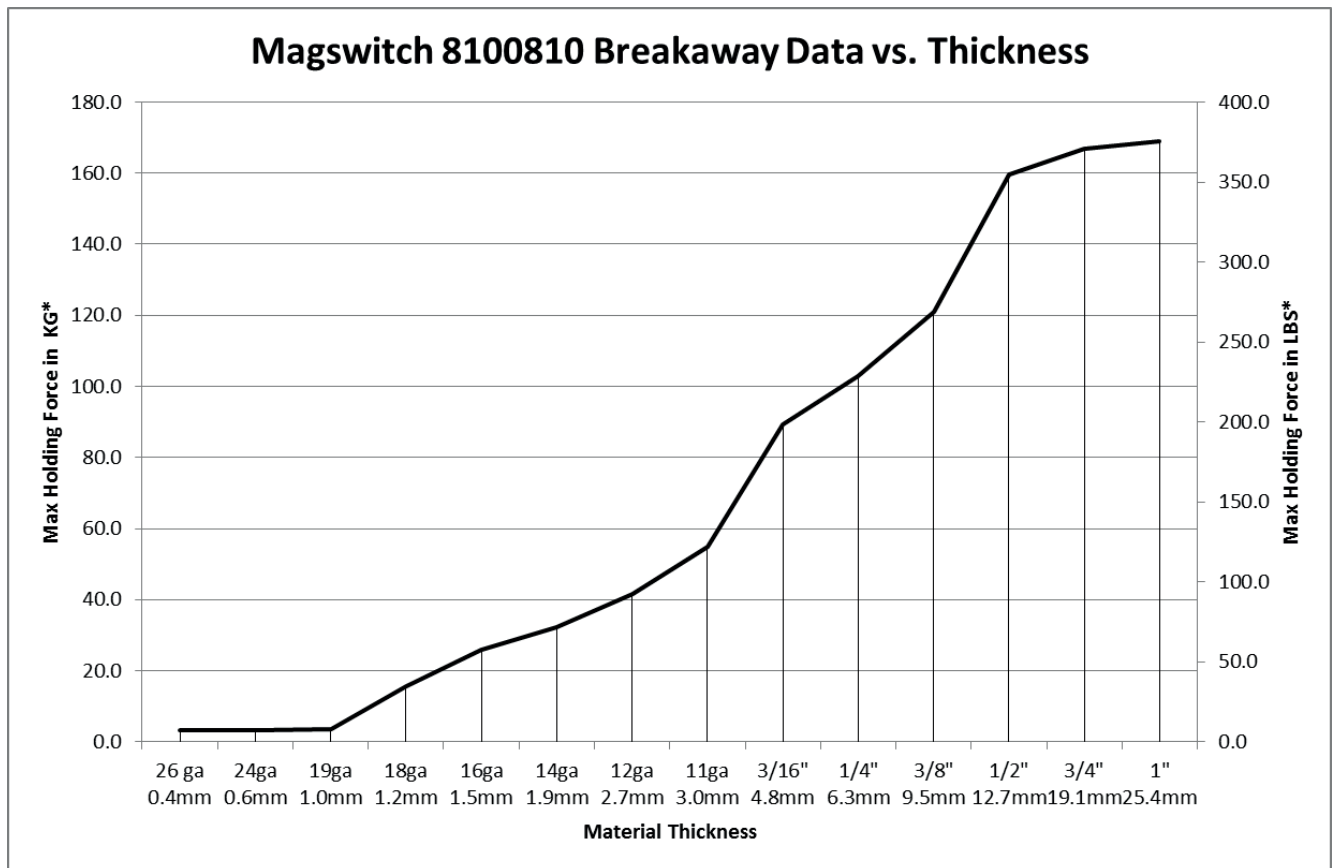




400 Fixed Manual Hand Lifter

P/N: 8100810

Safe Working Load



* Max Breakaway determined in laboratory environment on 2" thick SAE1018 Steel with surface roughness 63 micro inches. Many factors contribute to the actual breakaway force in each application. Always test the magswitch in each application before deployment. Refer to the magswitch information booklet for more information.