

# PINSTAMP® TMP3200

Mark Bigger. Mark Better.

## Key Features

**Rugged, Low-Maintenance X/Y Platform:** Built to endure tough conditions with minimal upkeep.

**Compact, Contaminant-Resistant Head:** Perfect for production lines where reliability is critical.

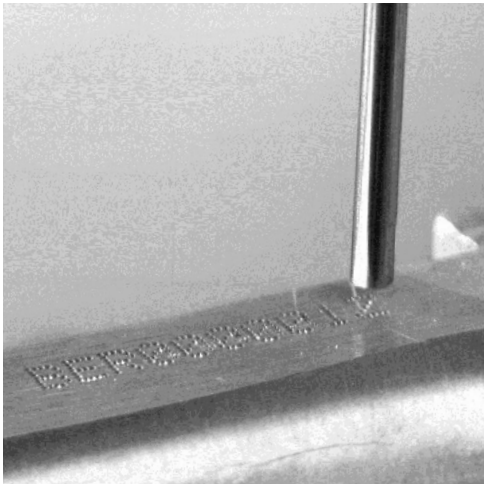
**Material Versatility:** Marks a wide range of materials, including plastics and hardened steel up to RC60.

**Easy Integration:** Seamlessly interface with PLCs and host computers to streamline operations.

**Interchangeable Marking Pin Sizes:** Adjust marking depth between 0.001" to 0.025" (0.03 mm to 0.63 mm)

**Floating Pin Technology:** Handles surface irregularities for precise, consistent marking.

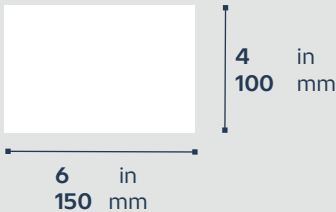
**Automated Marking Functions:** Automatically generate serial numbers, time, date, and shift codes.



## Demanding Durability

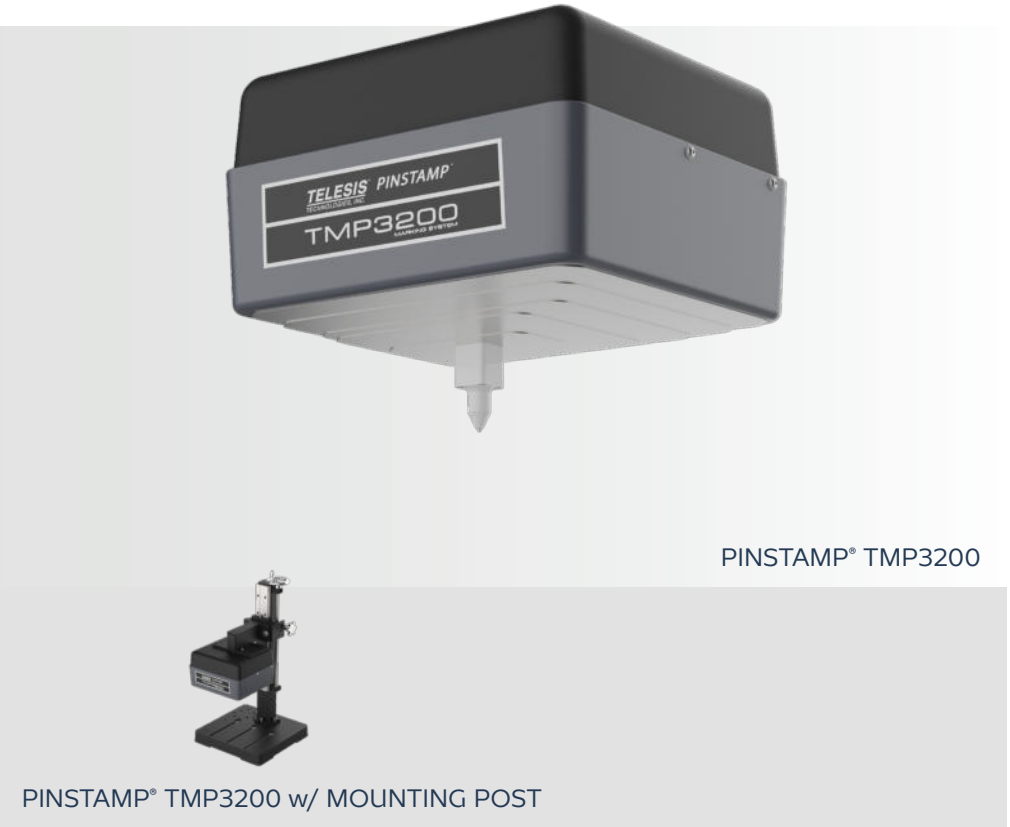
Engineered to withstand continuous use, the TMP3200 thrives in high-output industrial environments. Its rugged construction minimizes maintenance needs and downtime. With superior reliability, it keeps your production line running efficiently.

## Marking Area



## Head Dimensions

W x D x H (without pin cartridge)					
11.32 in	x	10.32 in	x	6.59 in	
287 mm	x	262 mm	x	167 mm	



PINSTAMP® TMP3200

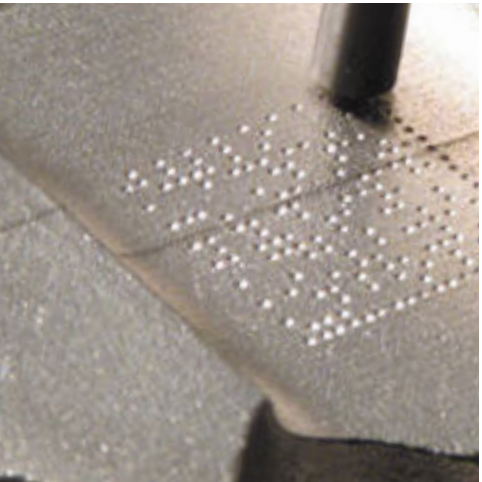
PINSTAMP® TMP3200 w/ MOUNTING POST

## Performance Specifications

Material Compatibility	Soft plastics to hardened steel (up to RC60)
Marking Depth	0.001 in to 0.025 in (0.03 mm to 0.63 mm)
Pattern Storage	Hundreds of patterns
Connectivity	PLC, host computer interface
Available Models	TMP3200

## Options + Accessories

- Bar Code Scanner
- Foot Switch
- Marking Head Extension Cables
- Mounting Post
- Push Button Station
- Rotary Fixture
- System Computer
- Touch Screen Controller
- Various Marking Pins



## Expanded Marking Area

The Telesis TMP3200 is designed for large-scale marking applications, offering a significantly expanded marking area compared to other models. It allows you to handle bigger jobs without sacrificing precision or speed. Ideal for marking larger parts or multiple items in one setup, the TMP3200 maximizes throughput and productivity on demanding production lines.

## Heavy Duty Power

Built for versatility, the TMP3200 easily marks a wide range of materials, from delicate plastics to hardened steel (RC60). Whether you need deep, permanent marks or rapid high-volume coding, this pin marker excels under tough conditions. Its robust design and advanced pin control ensure clear, legible marks across varying surfaces and geometries.