



Double the Power

Telesis Summit.Pro™ sets a new standard in laser marking technology with available dual-head design, delivering maximized marking power. This patented technology increases throughput, reduces costs, and ensures unmatched marking speed and precision. **No other laser marking system on the market comes close.**



Great For Marking

ALUMINUM	PLASTICS	COLD ROLLED STEEL
STAINLESS STEEL	BRASS	TITANIUM



Power Options

30-Watt
50-Watt
100-Watt



Summit.Pro™ Laser Marker **with Vari-Z™**



Summit.Pro™ Laser Marker

Lens Configurations

Lens	Marking Area				Working Clearance*	
F100	2.56 in	x	2.56 in	65 mm x 65 mm	3.82 in ± 0.24 in	97 mm ± 6 mm
F160	3.54 in	x	3.54 in	90 mm x 90 mm	6.93 in ± 0.59 in	176 mm ± 15 mm
F163	4.33 in	x	4.33 in	110 mm x 110 mm	7.28 in ± 0.63 in	185 mm ± 16 mm
F254	6.89 in	x	6.89 in	175 mm x 175 mm	11.65 in ± 1.54 in	296 mm ± 39 mm
F330	9.06 in	x	9.06 in	230 mm x 230 mm	15.24 in ± 2.48 in	387 mm ± 63 mm
F350	9.84 in	x	9.84 in	250 mm x 250 mm	15.39 in ± 2.76 in	392 mm ± 70 mm
F420	11.42 in	x	11.42 in	290 mm x 290 mm	19.41 in ± 4.72 in	493 mm ± 106 mm

Note: *Denotes variable working clearance for Vari-Z equipped markers

Options + Accessories

- Auto-Focus™
- Dual-Head Configuration
- Ethernet IP
- Fume Extraction System
- iZONIT™
- Mark-on-the-Fly Ready
- Profinet
- Programmable Mounting Post
- Rotary Axis Fixture
- Televue™
- Vari-Z™

Enclosures

- ProStation™
- Mini ProStation™
- BoxPro™



Laser Head Dimensions

Length	Width	Height
20.508 in x	4.975 in x	5.479 in
520.9 mm x	126.4 mm x	139.12 mm

Note: Dimensions shown for Base SP Head with F100 lens. Other models vary.

Power and Innovation

Designed with **high-quality, heavy-duty components**, the Summit.Pro withstands even the most demanding manufacturing environments. Its compact footprint saves space, while flexible lens options, EIP, and PROFINET compatibility make integration seamless for any production line. This next-generation fiber laser marking system offers **superior mark quality, consistency, and depth, all while reducing energy consumption and eliminating consumables.**

Smart Automation

The Summit.Pro™ delivers exceptional efficiency and precision with advanced technology designed for seamless operation. Its **AutoFocus™** feature automatically adjusts the focal point for each part, ensuring consistent, high-quality marks with minimal manual effort. **Vari-Z™** simplifies height adjustments, handling parts of varying sizes without recalibration. **Integrated InLine Vision** further enhances accuracy by providing built-in code reading and inspection, all while minimizing footprint and integration costs.

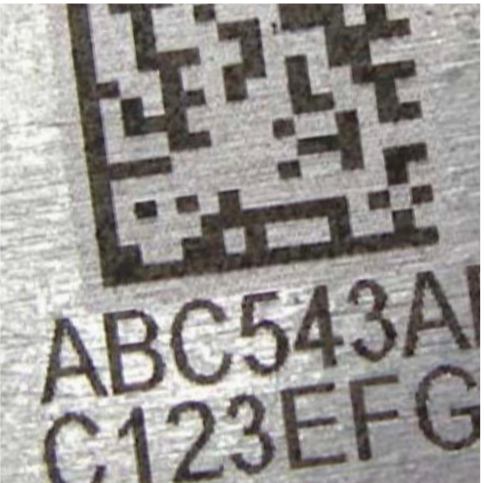


XpressMark™

Marking Made Simple

Precision Perfected

Elevate your laser marking experience with the powerful and versatile Merlin® software. Fully integrated with XpressMark, **Merlin® provides an intuitive platform for designing, managing, and executing marks with precision and ease.** This seamless hardware-software synergy delivers a complete marking solution, with advanced functionality and **user-friendly operation for exceptional performance.**



Great For Marking

ALUMINUM	PLASTICS	COLD ROLLED STEEL
STAINLESS STEEL	BRASS	TITANIUM



Power Options

30-Watt
50-Watt
100-Watt



XpressMark™ Laser Marker with Vari-Z™



XpressMark™ Laser Marker with Vision



XpressMark™ Laser Marker

Lens Configurations

Lens	Marking Area				Working Clearance	
F160	4.33 in	x	4.33 in	110 mm x 110 mm	7.13 in	181 mm
F163*	4.33 in	x	4.33 in	110 mm x 110 mm	7.28 in ± 0.63in	185 mm ± 16 mm
F254	6.89 in	x	6.89 in	175 mm x 175 mm	11.50 in	292 mm
F254*	6.89 in	x	6.89 in	175 mm x 175 mm	11.65 in ± 1.54in	296 mm ± 39mm
F380	9.84 in	x	9.84 in	250 mm x 250 mm	16.02 in	407 mm
F420	11.81 in	x	11.81 in	300 mm x 300 mm	17.13 in	435 mm
F470	13.78 in	x	13.78 in	350 mm x 350 mm	19.29 in	490 mm

Note: *Denotes lenses available for Vari-Z™ heads
Note: Vision Heads use F160 and F254 standard lenses

Options + Accessories

- Auto-Focus™
- Ethernet IP
- Fume Extraction System
- Mark-on-the-Fly Ready
- Profinet
- Programmable Mounting Post
- Rotary Axis Fixture
- Teleview™ Code Reading
- Vari-Z™

Enclosures

- ProStation™
- Mini ProStation™
- BoxPro™



Laser Head Dimensions

Length	Width	Height
19.35 in x 492 mm	5.07 in x 129 mm	5.18 in x 131 mm

Note: Dimensions shown for XPM Head.
Other models vary.

Unmatched Flexibility

The Telesis XpressMark™ sets the standard for precision, flexibility, and seamless integration. This **advanced fiber laser marker delivers crisp, permanent marks on both stationary and moving parts**, with exceptional beam quality for intricate designs and small details. Available in embedded and non-embedded configurations, **it excels as a stand-alone system or part of a production line**, offering **unmatched versatility** for nearly any marking application.

Smart Automation

XpressMark™ offers technology for unmatched efficiency and precision. **AutoFocus™** automatically adjusts the focal point for each part, **ensuring consistent marks with minimal manual intervention.** **Vari-Z™** allows for seamless height adjustments, accommodating parts of different sizes without the need for recalibration. **Integrated InLine Vision** enhances marking accuracy **with code reading and inspection**, reducing footprint and integration costs.